

Catalog Number: HZ-1331

Data Sheet

HumanKine[®] CNTF (Recombinant Human)



Animal Component-Free

Human cell expressed

Tag-Free

Endotoxin Free

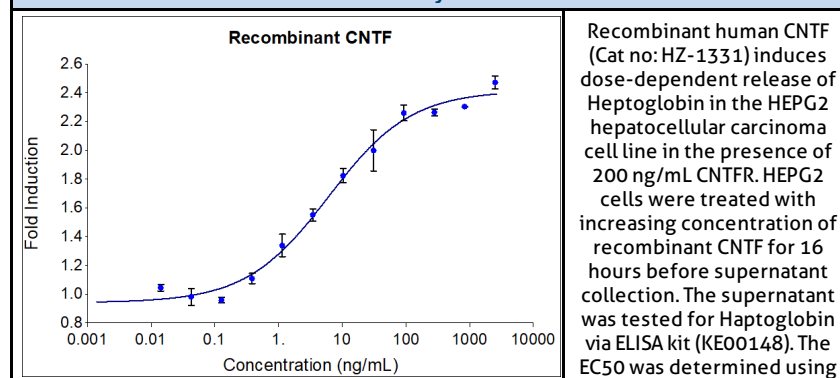
Product Description

Alternative Names	Ciliary Neurotrophic Factor
Source	Human Embryonic Kidney cells (HEK293). HEK293-derived CNTF protein

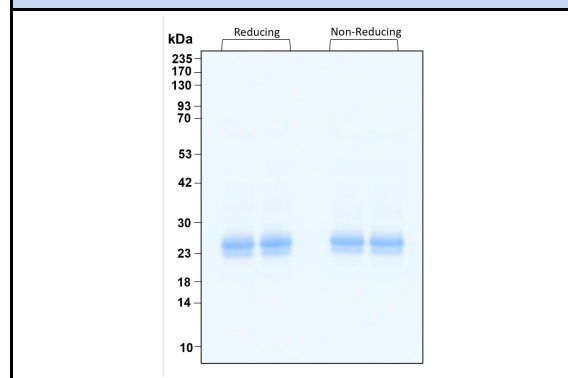
Specifications

Test	Method	Specification
Activity	Dose-Dependent secretion of Haptoglobin in response to CNTF in HEPG2 Hepatocellular carcinoma cells in the presence of 100 ng/mL CNTFR	2.75-14 ng/mL
Molecular Mass	SDS-PAGE	23-27 kDa reduced and non-reduced, monomer, non-glycosylated
Purity	SDS-PAGE	>95%
Endotoxin	LAL	<1 EU/ μ g

Activity Data



SDS-PAGE



www.ptglab.com

Document #: FR-QA118-101 Rev 0
Data Sheet Version #:

Proteintech Group, Inc.

5500 Pearl Street, Suite 400 Rosemont, IL 60012
t: 1-888-478-4522; f: 1-312-455-8408
Email: proteintech@ptglab.com

Preparation	
Shipping Temperature	ambient temperature
Formulation	1x PBS, See Certificate of Analysis for details
Reconstitution	Briefly centrifuge the vial before opening. It is recommended to reconstitute the protein in sterile 1x PBS pH 7.4 containing 0.1% endotoxin-free recombinant human serum albumin (HSA). Gently swirl or tap vials to mix.

Stability and Storage	Product Form	Temperature Conditions	Storage Time (From Date of Receipt)
	Lyophilized	-20°C to -80°C	Until Expiry Date
	Lyophilized	Room Temperature	2 weeks
	Reconstituted as per CofA	-20°C to -80°C	6 months
	Reconstituted as per CofA	4°C	1 week
Avoid repeated freeze-thaw cycles.			

www.ptglab.com

Document #: FR-QA118-101 Rev 0
Data Sheet Version #:

Proteintech Group, Inc.
5500 Pearl Street, Suite 400 Rosemont, IL 60612
t: 1-888-478-4522; f: 1-312-455-8408
Email: proteintech@ptglab.com