

For Research Use Only

HRP-conjugated C1qC Recombinant monoclonal antibody

Catalog Number:HRP-85031-5



Basic Information

Catalog Number:

HRP-85031-5

Source:

Rabbit

Isotype:

IgG

Immunogen Catalog Number:

AG10400

GenBank Accession Number:

BC009016

GeneID (NCBI):

714

UNIPROT ID:

P02747

Full Name:

complement component 1, q subcomponent, C chain

Calculated MW:

245 aa, 26 kDa

Observed MW:

24-26 kDa

Purification Method:

Protein A purification

CloneNo.:

242624B1

Recommended Dilutions:

WB: 1:2000-1:10000

Applications

Tested Applications:

WB

Species Specificity:

human

Positive Controls:

WB : human plasma,

Background Information

The first component of complement, C1, is a calcium-dependent complex of the 3 subcomponents C1q, C1r, and C1s. C1q is composed of 18 polypeptide chains: six A-chains, six B-chains, and six C-chains. Each chain contains a collagen-like region located near the N terminus and a C-terminal globular region. Deficiency of C1q has been associated with lupus erythematosus and glomerulonephritis. This antibody is raised against C1qC which is the C-chain polypeptide of human complement subcomponent C1q.

Storage

Storage:

Store at -20°C. Avoid exposure to light. Stable for one year after shipment.

Storage Buffer:

PBS with 50% glycerol, 0.05% Proclin300, 0.5% BSA, pH7.3

Aliquoting is unnecessary for -20°C storage

For technical support and original validation data for this product please contact:

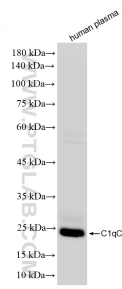
T: 4006900926

E: Proteintech-CN@ptglab.com

W: ptgcn.com

This product is exclusively available under Proteintech Group brand and is not available to purchase from any other manufacturer.

Selected Validation Data



human plasma were subjected to SDS PAGE followed by western blot with HRP-85031-5 (C1qC antibody) at dilution of 1:5000 incubated at room temperature for 1.5 hours.