

For Research Use Only

HRP-conjugated Alpha Tubulin Recombinant antibody

Catalog Number: HRP-80762

Featured Product

1 Publications



Basic Information

Catalog Number:

HRP-80762

Concentration:

1000 μ g/ml

Source:

Rabbit

Isotype:

IgG

Immunogen Catalog Number:

AG18034

GenBank Accession Number:

BC009314

GeneID (NCBI):

10376

UNIPROT ID:

P68363

Full Name:

tubulin, alpha 1b

Calculated MW:

50 kDa

Observed MW:

50-55 kDa

Purification Method:

Protein A purification

CloneNo.:

1G7

Recommended Dilutions:

WB: 1:2000-1:16000

Applications

Tested Applications:

WB

Cited Applications:

WB

Species Specificity:

human, mouse, rat

Positive Controls:

WB : HeLa cells, NIH/3T3 cells, mouse brain tissue

Background Information

There are five tubulins in human cells: alpha, beta, gamma, delta, and epsilon. Tubulins are conserved across species. They form heterodimers, which multimerize to form a microtubule filament. An alpha and beta tubulin heterodimer is the basic structural unit of microtubules. The heterodimer does not come apart once formed. The alpha and beta tubulins, which are each about 55 kDa MW, are homologous but not identical. Alpha tubulin is useful for scientists across fields as an internal control due to its high, ubiquitous expression pattern.

Notable Publications

Author	Pubmed ID	Journal	Application
Pengcheng Liu	40038727	J Transl Med	WB

Storage

Storage:

Store at -20°C. Avoid exposure to light. Stable for one year after shipment.

Storage Buffer:

PBS with 50% glycerol, 0.05% Proclin300, 0.5% BSA, pH7.3

Aliquoting is unnecessary for -20°C storage

For technical support and original validation data for this product please contact:

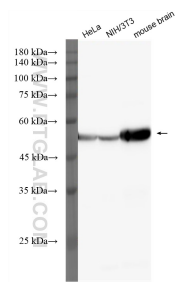
T: 4006900926

E: Proteintech-CN@ptglab.com

W: ptgcn.com

This product is exclusively available under Proteintech Group brand and is not available to purchase from any other manufacturer.

Selected Validation Data



Various lysates were subjected to SDS PAGE followed by western blot with HRP-80762 (Alpha Tubulin antibody) at dilution of 1:8000 incubated at room temperature for 1.5 hours.