

HRP-conjugated IgD Monoclonal antibody

Catalog Number: **HRP-67538**

Basic Information

Catalog Number:

HRP-67538

Size:

1000 µg/ml

Source:

Mouse

Isotype:

IgG2a

Immunogen Catalog Number:

AG9614

GenBank Accession Number:

BC021276

GeneID (NCBI):

3495

Full Name:

immunoglobulin heavy constant
delta

Calculated MW:

573 aa, 63 kDa

Observed MW:

55-70 kDa

Purification Method:

Protein A purification

CloneNo.:

1D1B12

Recommended Dilutions:

WB 1:5000-1:50000

Applications

Tested Applications:

WB

Species Specificity:

Human

Positive Controls:

WB : human plasma,

Background Information

IgD is the major antigen receptor isotype on the surface of most peripheral B-cells. The function of IgD is to signal the B cells to be activated. The relative molecular mass and half-life of secreted IgD is 185 kDa and 2.8 days, respectively. Secreted IgD is produced as a monomeric antibody with two heavy chains of the delta (δ) class, and two Ig light chains. This antibody detects the heavy chain (55-70 kDa) of IgD and secreted IgD (185 kDa) .

Storage

Storage:

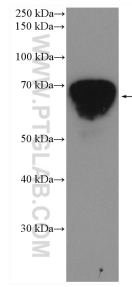
Store at -20°C. Avoid exposure to light.

Storage Buffer:

PBS with 50% Glycerol, 0.05% Proclin300, 0.5% BSA, pH 7.3.

Aliquoting is unnecessary for -20°C storage

Selected Validation Data



human plasma were subjected to SDS PAGE followed by western blot with HRP-67538 (human IgD antibody) at dilution of 1:10000 incubated at room temperature for 1.5 hours.