

For Research Use Only

HRP-conjugated IgG Lambda Light Chain Polyclonal antibody

Catalog Number: HRP-20758

2 Publications



Basic Information

Catalog Number:

HRP-20758

Size:

1000 µg/ml

Source:

Rabbit

Isotype:

IgG

Immunogen Catalog Number:

AG14693

GenBank Accession Number:

BC007782

GeneID (NCBI):

3537

Full Name:

immunoglobulin lambda constant 1
(Mcg marker)

Calculated MW:

233 aa, 25 kDa

Observed MW:

25 kDa

Purification Method:

Antigen affinity purification

Recommended Dilutions:

WB 1:1000-1:6000

Applications

Tested Applications:

WB

Cited Applications:

WB

Species Specificity:

human

Positive Controls:

WB : human plasma,

Background Information

This antibody detects the lambda light chain of human IgG.

Notable Publications

Author	Pubmed ID	Journal	Application
Chunping Yin	35040026	Neurochem Res	WB
Xiao-Hui Yan	38967891	Curr Med Sci	WB

Storage

Storage:

Store at -20°C. Avoid exposure to light. Stable for one year after shipment.

Storage Buffer:

PBS with 50% Glycerol, 0.05% Proclin300, 0.5% BSA, pH 7.3.

Aliquoting is unnecessary for -20°C storage

For technical support and original validation data for this product please contact:

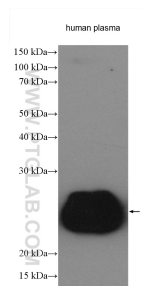
T: 4006900926

E: Proteintech-CN@ptglab.com

W: ptgcn.com

This product is exclusively available under Proteintech Group brand and is not available to purchase from any other manufacturer.

Selected Validation Data



human plasma were subjected to SDS PAGE followed by western blot with HRP-20758 (IgG Lambda Light Chain antibody) at dilution of 1:3000 incubated at room temperature for 1.5 hours.