

For Research Use Only

# HRP-conjugated Human IgA Heavy Chain Polyclonal antibody



Catalog Number:HRP-11449

1 Publications

## Basic Information

Catalog Number:

HRP-11449

Size:

1000 µg/ml

Source:

Rabbit

Isotype:

IgG

Immunogen Catalog Number:

AG2007

GenBank Accession Number:

BC016369

GeneID (NCBI):

3493

Full Name:

immunoglobulin heavy constant

alpha 1

Calculated MW:

496 aa, 53 kDa

Observed MW:

55 kDa

Purification Method:

Antigen affinity purification

Recommended Dilutions:

WB 1:5000-1:50000

## Applications

Tested Applications:

WB

Cited Applications:

WB

Species Specificity:

human

Cited Species:

human

Positive Controls:

WB : human plasma,

## Background Information

Ig alpha is the major immunoglobulin class in body secretions. It may serve both to defend against local infection and to prevent access of foreign antigens to the general immunologic system. This antibody recognizes the Chain C region of human Ig alpha-1 (IGHA1).

## Notable Publications

Author	Pubmed ID	Journal	Application
Menghong Wan	38544929	Int J Chron Obstruct Pulmon Dis	WB

## Storage

Storage:

Store at -20°C. Avoid exposure to light. Stable for one year after shipment.

Storage Buffer:

PBS with 50% Glycerol, 0.05% Proclin300, 0.5% BSA, pH 7.3.

Aliquoting is unnecessary for -20°C storage

For technical support and original validation data for this product please contact:

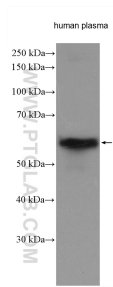
T: 4006900926

E: [Proteintech-CN@ptglab.com](mailto:Proteintech-CN@ptglab.com)

W: [ptgcn.com](http://ptgcn.com)

This product is exclusively available under Proteintech Group brand and is not available to purchase from any other manufacturer.

## Selected Validation Data



Human plasma were subjected to SDS PAGE followed by western blot with HRP-11449 (Human IgA Heavy Chain antibody) at dilution of 1:10000 incubated at room temperature for 1.5 hours.