

For Research Use Only

FITC Plus Anti-Human CD68 Rabbit Recombinant Antibody

Catalog Number: FITC-98242



Basic Information

Catalog Number: FITC-98242	GenBank Accession Number: BC015557	Purification Method: Protein A purification
Concentration: 100 tests, 5 ul/test	GeneID (NCBI): 968	CloneNo.: 241810G1
Source: Rabbit	UNIPROT ID: P34810	Recommended Dilutions: FC (Intra): 5 ul per 10 ⁶ cells in a 100 µl suspension
Isotype: IgG	Full Name: CD68 molecule	Excitation/Emission maxima wavelengths: 495 nm / 524 nm
Immunogen Catalog Number: EG2061	Calculated MW: 37 kDa	

Applications

Tested Applications: FC (Intra)	Positive Controls: FC (Intra) : human PBMCs,
Species Specificity: human	

Background Information

CD68 is a type I transmembrane glycoprotein that is highly expressed by human monocytes and tissue macrophages. It belongs to the lysosomal/endosomal-associated membrane glycoprotein (LAMP) family and primarily localizes to lysosomes and endosomes with a smaller fraction circulating to the cell surface. CD68 is also a member of the scavenger receptor family. It may play a role in phagocytic activities of tissue macrophages.

Storage

Storage:
Store at 2-8°C. Avoid exposure to light. Stable for one year after shipment.
Storage Buffer:
PBS with 0.09% sodium azide and 0.5% BSA, pH7.3

For technical support and original validation data for this product please contact:

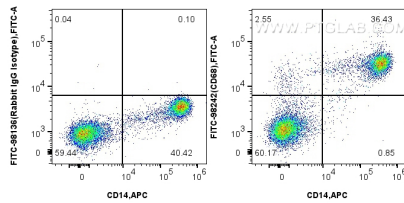
T: 4006900926

E: Proteintech-CN@ptglab.com

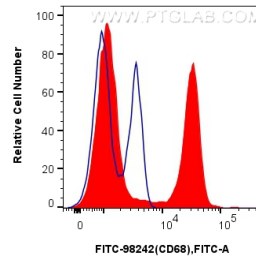
W: ptgcn.com

This product is exclusively available under Proteintech Group brand and is not available to purchase from any other manufacturer.

Selected Validation Data



1x10⁶ human PBMCs were intracellularly stained with APC Anti-Human CD14, and 5 ul FITC Plus Anti-Human CD68 Rabbit RecAb (FITC-98242, Clone: 241810G1) or FITC Plus Rabbit IgG Isotype Control RecAb (FITC-98136, Clone: 240953C9). Cells were incubated with FC Receptor Block prior to staining. Cells were fixed with 4% PFA and permeabilized with Flow Cytometry Perm Buffer.



1x10⁶ human PBMCs were intracellularly stained with 5 ul FITC Plus Anti-Human CD68 Rabbit RecAb (FITC-98242, Clone: 241810G1) (red), or FITC Plus Rabbit IgG Isotype Control RecAb (FITC-98136, Clone: 240953C9) (blue). Cells were incubated with FC Receptor Block prior to staining. Cells were fixed with 4% PFA and permeabilized with Flow Cytometry Perm Buffer.