

For Research Use Only

# FITC Plus Anti-Mouse PD-L2/CD273 Rabbit Recombinant Antibody

Catalog Number: FITC-98241



## Basic Information

<b>Catalog Number:</b> FITC-98241	<b>GenBank Accession Number:</b> NM_021396.2	<b>Purification Method:</b> Protein A purification
<b>Concentration:</b> 100ug, 500 ug/ml	<b>GeneID (NCBI):</b> 58205	<b>CloneNo.:</b> 241728D8
<b>Source:</b> Rabbit	<b>UNIPROT ID:</b> Q9WUL5	<b>Excitation/Emission maxima wavelengths:</b> 495 nm / 524 nm
<b>Isotype:</b> IgG	<b>Full Name:</b> programmed cell death 1 ligand 2	
<b>Immunogen Catalog Number:</b> EG1842	<b>Calculated MW:</b> 28kDa	

## Applications

**Tested Applications:**  
FC

**Species Specificity:**  
mouse

## Background Information

Programmed cell death ligand 2 (PD-L2, also known as CD273, or B7-DC), is one of the B7 family molecules which are type I transmembrane proteins belonging to the immunoglobulin superfamily. PD-L2 was identified both by its homology to PD-L1 and by analysis of genes differentially expressed in libraries generated from dendritic cells (DC) and activated macrophages (PMID: 14515254). PD-L2 is a second ligand for PD-1, a costimulatory molecule that plays an inhibitory role in regulating T cell activation in the periphery.

## Storage

**Storage:**  
Store at 2-8°C. Avoid exposure to light. Stable for one year after shipment.

**Storage Buffer:**  
PBS with 0.09% sodium azide, pH7.3

For technical support and original validation data for this product please contact:

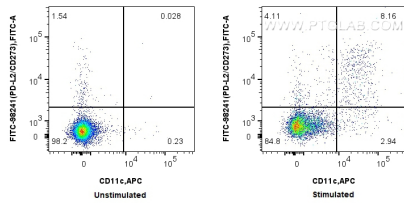
T: 4006900926

E: [Proteintech-CN@ptglab.com](mailto:Proteintech-CN@ptglab.com)

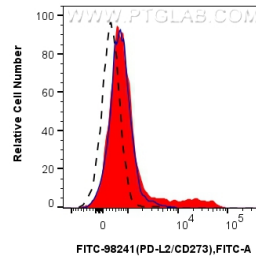
W: [ptgcn.com](http://ptgcn.com)

This product is exclusively available under Proteintech Group brand and is not available to purchase from any other manufacturer.

## Selected Validation Data



1x10<sup>6</sup> untreated or GM-CSF treated mouse splenocytes were surface stained with APC Anti-Mouse CD11c and 0.25 ug FITC Plus Anti-Mouse PD-L2/CD273 Rabbit RecAb (FITC-98241, Clone: 241728D8). Cells were not fixed.



1x10<sup>6</sup> GM-CSF treated mouse splenocytes were surface stained with 0.25 ug FITC Plus Anti-Mouse PD-L2/CD273 Rabbit RecAb (FITC-98241, Clone: 241728D8) (red) or FITC Plus Rabbit IgG Isotype Control RecAb (FITC-98136, Clone: 240953C9) (blue). 1x10<sup>6</sup> untreated mouse splenocytes were surface stained with 0.25 ug FITC Plus Anti-Mouse PD-L2/CD273 Rabbit RecAb (FITC-98241, Clone: 241728D8) (black, dashed). Cells were not fixed.