

For Research Use Only

FITC Plus Anti-Human KIM-1/HAVCR1 Rabbit Recombinant Antibody

Catalog Number: FITC-98238



Basic Information

Catalog Number: FITC-98238	GenBank Accession Number: NM_001173393.3	Purification Method: Protein A purification
Concentration: 100 tests, 5 ul/test	GeneID (NCBI): 26762	CloneNo.: 242001E8
Source: Rabbit	UNIPROT ID: Q96D42	Excitation/Emission maxima wavelengths: 495 nm / 524 nm
Isotype: IgG	Full Name: hepatitis A virus cellular receptor 1	
Immunogen Catalog Number: EG1442	Calculated MW: 39kDa	

Applications

Tested Applications:
FC

Species Specificity:
human

Background Information

Kidney injury molecule 1 (KIM-1), also known as Hepatitis A virus cellular receptor 1 (HAVCR1), CD365, or T-cell immunoglobulin and mucin domain 1 (TIM-1), is a class I integral membrane glycoprotein, with an ectodomain containing Ig-like domain and a mucin domain. KIM-1 acts as a membrane receptor for hepatitis A virus (HAV) (PMID: 9658108; 8861957). KIM-1 provides a costimulatory signal for T cell activation and inhibits the development of peripheral tolerance (PMID: 16284246; 15793575). KIM-1 may be involved in the regulation of asthma and allergic diseases (PMID: 14534576). It has been reported that KIM-1 is shed into urine after acute kidney damage and is a marker of renal tubular injury (PMID: 14600030).

Storage

Storage:
Store at 2-8°C. Avoid exposure to light. Stable for one year after shipment.

Storage Buffer:
PBS with 0.09% sodium azide and 0.5% BSA, pH7.3

For technical support and original validation data for this product please contact:

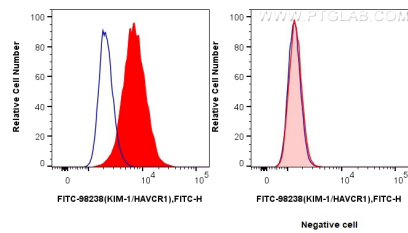
T: 4006900926

E: Proteintech-CN@ptglab.com

W: ptgcn.com

This product is exclusively available under Proteintech Group brand and is not available to purchase from any other manufacturer.

Selected Validation Data



1x10⁶ HuH-7 cells (left) or HEK293T cells (right) were stained with 0.25 ug FITC Plus Anti-Human KIM-1/HAVCR1 Rabbit RecAb (FITC-98238, Clone: 242001E8) (red), or FITC Plus Rabbit IgG Isotype Control Recombinant Antibody (FITC-98136, Clone: 240953C9) (blue). Cells were not fixed.