

For Research Use Only

# FITC Plus Anti-Human LILRB3/CD85a Rabbit Recombinant Antibody

Catalog Number: FITC-98237



## Basic Information

**Catalog Number:**

FITC-98237

**Concentration:**

100 tests, 5 µl/test

**Source:**

Rabbit

**Isotype:**

IgG

**GenBank Accession Number:**

BC112198

**GeneID (NCBI):**

11025

**UNIPROT ID:**

O75022

**Full Name:**

leukocyte immunoglobulin-like receptor, subfamily B (with TM and ITIM domains), member 3

**Calculated MW:**

631 aa, 69 kDa

**Purification Method:**

Protein A purification

**CloneNo.:**

241894C10

**Excitation/Emission maxima wavelengths:**

495 nm / 524 nm

## Applications

**Tested Applications:**

FC

**Species Specificity:**

human

## Background Information

The leukocyte immunoglobulin-like receptors (LIRs, also known as ILTs, CD85, and LILRs) comprise a family of related immunoregulatory receptors encoded within the leukocyte receptor cluster (LRC) at chromosomal region 19q13.4 (PMID: 11491530). LIRs are transmembrane proteins containing either two or four extracellular immunoglobulin domains, and have diverse functions, including the regulation of inflammation, immune tolerance, cell differentiation and nervous system plasticity (PMID: 16406677; 26040207). LILRB3, also known as ILT-5 or CD85a, belongs to the subfamily B class of LIR receptors which contain two or four extracellular immunoglobulin domains, a transmembrane domain, and two to four cytoplasmic immunoreceptor tyrosine-based inhibitory motifs (ITIMs). LILRB3 is found on the surface of a variety of cell types including monocytes/macrophages, granulocytes, NK cells and some T cells. It binds to MHC class I molecules and transduces a negative signal that inhibits stimulation of an immune response. LILRB3 has been reported as a myeloid cell checkpoint that elicits profound immunomodulation (PMID: 32870822).

## Storage

**Storage:**

Store at 2-8°C. Avoid exposure to light. Stable for one year after shipment.

**Storage Buffer:**

PBS with 0.09% sodium azide and 0.5% BSA.

For technical support and original validation data for this product please contact:

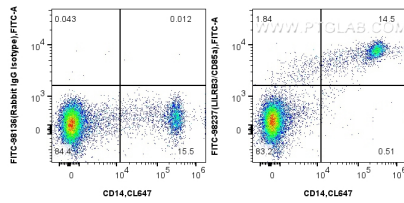
T: 4006900926

E: [Proteintech-CN@ptglab.com](mailto:Proteintech-CN@ptglab.com)

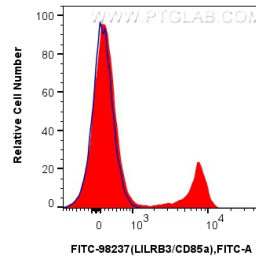
W: [ptgcn.com](http://ptgcn.com)

This product is exclusively available under Proteintech Group brand and is not available to purchase from any other manufacturer.

## Selected Validation Data



1x10<sup>6</sup> human PBMCs were surface stained with CoraLite® Plus 647 Anti-Human CD14, and 5 ul FITC Plus Anti-Human LILRB3/CD85a Rabbit RecAb (FITC-98237, Clone:241894C10), or FITC Plus Rabbit IgG Isotype Control RecAb (FITC-98136, Clone: 240953C9). Cells were not fixed.



1x10<sup>6</sup> human PBMCs were surface stained with 5 ul FITC Plus Anti-Human LILRB3/CD85a Rabbit RecAb (FITC-98237, Clone:241894C10)(red), or FITC Plus Rabbit IgG Isotype Control RecAb (FITC-98136, Clone: 240953C9)(blue). Cells were not fixed.