

For Research Use Only

FITC Plus Anti-Human CD300e Rabbit Recombinant Antibody

Catalog Number: FITC-98235



Basic Information

Catalog Number: FITC-98235	GenBank Accession Number: NM_181449.2	Purification Method: Protein A purification
Concentration: 100tests, 5 ul/test	GeneID (NCBI): 342510	CloneNo.: 242031C10
Source: Rabbit	UNIPROT ID: Q496F6	Recommended Dilutions: FC: 5 ul per 10 ⁶ cells in a 100 µl suspension
Isotype: IgG	Full Name: CD300e molecule	Excitation/Emission maxima wavelengths: 495 nm / 524 nm
Immunogen Catalog Number: EG2638	Calculated MW: 23 kDa	

Applications

Tested Applications: FC	Positive Controls: FC : human PBMCs,
Species Specificity: human	

Background Information

CD300e, also known as immune receptor expressed on myeloid cells 2 (IREM-2), CLM-2, or CMRF35-A5, is one of the CD300 family members which belong to the immunoglobulin (Ig) superfamily (PMID: 15557162; 20039296). CD300e is a type I transmembrane glycoprotein that contains an extracellular region comprising an Ig-like domain, a transmembrane region, and a short cytoplasmic tail (PMID: 15557162; 29358324). It is by monocytes and myeloid dendritic cells and transmits an immune-activating signal by interacting with DNAX-activating protein 12 (DAP12) (PMID: 29358324).

Storage

Storage:
Store at 2-8°C. Avoid exposure to light. Stable for one year after shipment.
Storage Buffer:
PBS with 0.09% sodium azide, pH7.3

For technical support and original validation data for this product please contact:

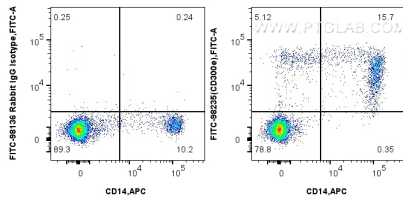
T: 4006900926

E: Proteintech-CN@ptglab.com

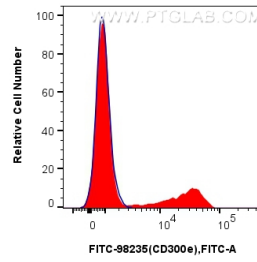
W: ptgcn.com

This product is exclusively available under Proteintech Group brand and is not available to purchase from any other manufacturer.

Selected Validation Data



1x10⁶ human PBMCs were surface stained with APC Anti-Human CD14, and 5 ul FITC Plus Anti-Human CD300e Rabbit RecAb (FITC-98235, Clone: 242031C10) or FITC Plus Rabbit IgG Isotype Control RecAb (FITC-98136, Clone: 240953C9). Cells were incubated with FC Receptor Block prior to staining. Cells were not fixed.



1x10⁶ human PBMCs were surface stained with 5 ul FITC Plus Anti-Human CD300e Rabbit RecAb (FITC-98235, Clone: 242031C10) (red) or FITC Plus Rabbit IgG Isotype Control RecAb (FITC-98136, Clone: 240953C9) (blue). Cells were incubated with FC Receptor Block prior to staining. Cells were not fixed.