

FITC Plus Anti-Human BCMA/TNFRSF17 Rabbit Recombinant Antibody

Catalog Number: FITC-98215

Basic Information

Catalog Number:

FITC-98215

Concentration:

100 tests, 5 µl/test

Source:

Rabbit

Isotype:

IgG

Immunogen Catalog Number:

EG1812

GenBank Accession Number:

BC058291

GeneID (NCBI):

608

UNIPROT ID:

Q02223

Full Name:tumor necrosis factor receptor
superfamily, member 17**Calculated MW:**

184 aa, 20 kDa

Purification Method:

Protein A purification

CloneNo.:

241731A11

Recommended Dilutions:FC: 5 µl per 10⁶ cells in a 100 µl
suspension**Excitation/Emission maxima
wavelengths:**

495 nm / 524 nm

Applications

Tested Applications:

FC

Species Specificity:

human

Positive Controls:

FC : U266 cells,

Background Information

BCMA (B cell maturation antigen), also known as TNFRSF17, is 20.2-kDa type III transmembrane glycoprotein and is a member of the TNF-receptor superfamily. This receptor is preferentially expressed in mature B lymphocytes and plasma cells, which may be important for B cell development and autoimmune response (PMID: 32943087; 9846698). BCMA has two agonist ligands: a proliferation-inducing ligand (APRIL) and BAFF. When BCMA binds to APRIL, it transmits signals of cell survival and proliferation (PMID: 27127303); when BCMA binds to BAFF, it mediates the activation of NF-kappaB and MAPK8/JNK (PMID: 36140254). It has been found that the overexpression and activation of BCMA are associated with multiple myeloma (MM) in preclinical models and humans, supporting its potential utility as a therapeutic target for MM (PMID: 32055000; 32943087).

Storage

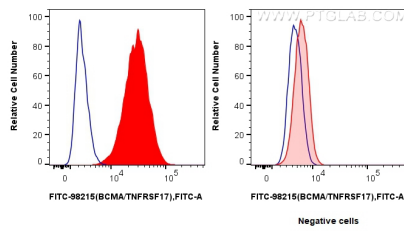
Storage:

Store at 2-8°C. Avoid exposure to light. Stable for one year after shipment.

Storage Buffer:

PBS with 0.09% sodium azide and 0.5% BSA, pH7.3

Selected Validation Data



1x10⁶ U266 cells (left) or HEK-293T cells (right) were surface stained with 5 ul FITC Plus Anti-Human BCMA/TNFRSF17 Rabbit RecAb (FITC-98215, Clone:241731A11) (red) or FITC Plus Rabbit IgG Isotype Control RecAb (FITC-98136, Clone:240953C9) (blue). Cells were not fixed.