

For Research Use Only

FITC Plus Anti-Mouse CD2 Rabbit Recombinant Antibody

Catalog Number: FITC-98193



Basic Information

Catalog Number:

FITC-98193

Concentration:

100ug, 500 ug/ml

Source:

Rabbit

Isotype:

IgG

Immunogen Catalog Number:

EG1403

GenBank Accession Number:

NM_013486.2

GeneID (NCBI):

12481

UNIPROT ID:

P08920

Full Name:

CD2 antigen

Calculated MW:

38 kDa

Purification Method:

Protein A purification

CloneNo.:

241548A5

Excitation/Emission maxima wavelengths:

495 nm / 524 nm

Applications

Tested Applications:

FC

Species Specificity:

mouse

Background Information

CD2 is a cell surface glycoprotein present on a majority of thymocytes, all mature T cells and subset of NK cells but not on B lymphocytes. It is a pan T-cell marker. CD2 interacts with lymphocyte function-associated antigen (LFA-3/CD58) and CD48/BCM1 to mediate adhesion between T-cells and other cell types. CD2 is implicated in the triggering of T-cells, the cytoplasmic domain is implicated in the signaling function.

Storage

Storage:

Store at 2-8°C. Avoid exposure to light. Stable for one year after shipment.

Storage Buffer:

PBS with 0.09% sodium azide, pH7.3

For technical support and original validation data for this product please contact:

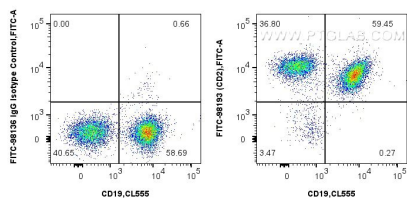
T: 4006900926

E: Proteintech-CN@ptglab.com

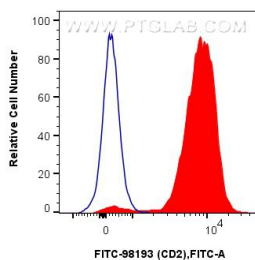
W: ptgcn.com

This product is exclusively available under Proteintech Group brand and is not available to purchase from any other manufacturer.

Selected Validation Data



1x10⁶ mouse splenocytes were surface stained with CoraLite® Plus 555 Anti-Mouse CD19 (1D3) (CL555-65290, Clone: 1D3) and 0.25 ug FITC Plus Anti-Mouse CD2 Rabbit RecAb (FITC-98193, Clone:241548A5) or FITC Plus Rabbit IgG Isotype Control RecAb (FITC-98136, Clone: 240953C9). Cells were not fixed.



1x10⁶ mouse splenocytes were surface stained with 0.25 ug FITC Plus Anti-Mouse CD2 Rabbit RecAb (FITC-98193, Clone: 241548A5) (red), or FITC Plus Rabbit IgG Isotype Control RecAb (FITC-98136, Clone: 240953C9) (blue). Cells were not fixed.