

For Research Use Only

FITC Plus Rabbit IgG Isotype Control Recombinant Antibody

Catalog Number: FITC-98136

1 Publications



Basic Information

Catalog Number:

FITC-98136

Concentration:

100ug, 500 μ g/ml

Source:

Rabbit

Isotype:

IgG

GenBank Accession Number:

GeneID (NCBI):

Full Name:

Purification Method:

Protein A purification

CloneNo.:

240953C9

Recommended Dilutions:

FC: 0.25 μ g per 10^6 cells in 100 μ l suspension

Excitation/Emission maxima wavelengths:

495 nm / 524 nm

Applications

Tested Applications:

FC

Cited Applications:

IF

Species Specificity:

n/a

Positive Controls:

FC :,

Background Information

This product is an isotype control antibody, which is used to estimate the non-specific binding of target primary antibodies due to Fc receptor binding or other protein-protein interactions. An isotype control antibody should have the same immunoglobulin type and be used at the same concentration as the test antibody.

Notable Publications

Author	Pubmed ID	Journal	Application
Jing Xu	40236486	Front Microbiol	IF

Storage

Storage:

Store at 2-8°C. Avoid exposure to light. Stable for one year after shipment.

Storage Buffer:

PBS with 0.09% sodium azide, pH7.3

For technical support and original validation data for this product please contact:

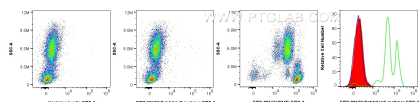
T: 4006900926

E: Proteintech-CN@ptglab.com

W: ptgcn.com

This product is exclusively available under Proteintech Group brand and is not available to purchase from any other manufacturer.

Selected Validation Data



1x10⁶ human peripheral blood leukocytes were unstained (left, blue in histogram) or surface stained with 0.25 μ g FITC Plus Rabbit IgG Isotype Control Rabbit Recombinant Antibody (FITC-98136, Clone:240953C9) (mid, red in histogram), or 0.25 μ g FITC Plus Anti-Human CD45 Rabbit Recombinant Antibody (FITC-98117, Clone: 241670E10) (right, green in histogram). Cells were incubated with FC Receptor Block prior to staining. Cells were not fixed.

