

For Research Use Only

FITC Plus Anti-Human CD45 Rabbit Recombinant Antibody

Catalog Number: FITC-98117-5



Basic Information

Catalog Number:

FITC-98117-5

Concentration:

100 tests, 5 ul/test

Source:

Rabbit

Isotype:

IgG

Immunogen Catalog Number:

EG2486

GenBank Accession Number:

GeneID (NCBI):

5788

ENSEMBL Gene ID:

ENSG0000081237

UNIPROT ID:

P08575

Full Name:

protein tyrosine phosphatase, receptor type, C

Calculated MW:

147 kDa

Purification Method:

Protein A purification

CloneNo.:

251964B9

Recommended Dilutions:

FC: 5 ul per 10⁶ cells in a 100 µl suspension

Excitation/Emission maximum wavelengths:

495 nm / 524 nm

Applications

Tested Applications:

FC

Species Specificity:

human, monkey, non-human primates

Positive Controls:

FC : human PBMCs,

Background Information

CD45, also known as protein tyrosine phosphatase, receptor type C, is a type I transmembrane protein expressed on the surface of all haematopoietic cells with the exception of erythrocytes and platelets (PMID: 3489673; 28615666). CD45 is a pan-haematopoietic cell marker and has been shown to be essential for T- and B-cell activation and signalling (PMID: 9429890; 16378097).

Storage

Storage:

Store at 2-8°C. Avoid exposure to light. Stable for one year after shipment.

Storage Buffer:

PBS with 0.09% sodium azide and 0.5% BSA, pH7.3

For technical support and original validation data for this product please contact:

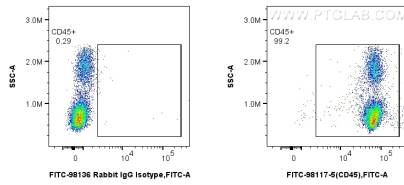
T: 4006900926

E: Proteintech-CN@ptglab.com

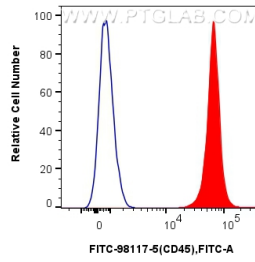
W: ptgcn.com

This product is exclusively available under Proteintech Group brand and is not available to purchase from any other manufacturer.

Selected Validation Data



1x10⁶ human PBMCs were surface stained with 5 ul FITC Plus Anti-Human CD45 Rabbit RecAb (FITC-98117-5, Clone: 251964B9) or FITC Plus Rabbit IgG Isotype Control Recombinant Antibody (FITC-98136, Clone: 240953C9). Cells were incubated with FC Receptor Block prior to staining. Cells were not fixed.



1x10⁶ human PBMCs were surface stained with 5 ul FITC Plus Anti-Human CD45 Rabbit RecAb (FITC-98117-5, Clone: 251964B9) (red) or FITC Plus Rabbit IgG Isotype Control Recombinant Antibody (FITC-98136, Clone: 240953C9) (blue). Cells were incubated with FC Receptor Block prior to staining. Cells were not fixed.