

For Research Use Only

FITC Plus Anti-Human CD160 Rabbit Recombinant Antibody

Catalog Number: FITC-98111



Basic Information

Catalog Number:

FITC-98111

Concentration:

100 tests, 5 µl/test

Source:

Rabbit

Isotype:

IgG

GenBank Accession Number:

BC014465

GeneID (NCBI):

11126

UNIPROT ID:

O95971

Full Name:

CD160 molecule

Calculated MW:

20 kDa

Purification Method:

Protein A purification

CloneNo.:

241415F2

Excitation/Emission maxima wavelengths:

495 nm / 524 nm

Applications

Tested Applications:

FC

Species Specificity:

human

Background Information

CD160 is a glycosylphosphatidylinositol (GPI)-anchored protein that is expressed on almost all intestinal intraepithelial lymphocytes (IELs), gamma delta T cells, CD56 (dim) CD16+ cytotoxic NK cells, and a minor subset of CD4+ and CD8+ T cells (PMID: 31332204; 25179432). The binding of CD160 to both classical and non-classical MHC I enhances NK and CD8+ cytotoxic T lymphocyte functions (PMID: 25179432). CD160 is a ligand for HVEM (herpes virus entry mediator) and the binding of CD160 to HVEM inhibits T cell activity (PMID: 19426226).

Storage

Storage:

Store at 2-8°C. Avoid exposure to light. Stable for one year after shipment.

Storage Buffer:

PBS with 0.09% sodium azide and 0.5% BSA, pH7.3

For technical support and original validation data for this product please contact:

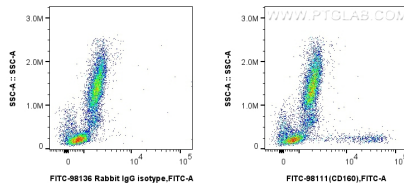
T: 4006900926

E: Proteintech-CN@ptglab.com

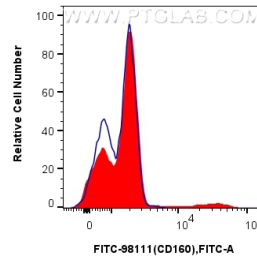
W: ptgcn.com

This product is exclusively available under Proteintech Group brand and is not available to purchase from any other manufacturer.

Selected Validation Data



1x10⁶ human peripheral blood leukocytes were surface stained with 5 ul FITC Plus Anti-Human CD160 Rabbit RecAb (FITC-98111, Clone: 241415F2), or FITC Plus Rabbit IgG Isotype Control RecAb (FITC-98136, Clone: 240953C9). Cells were incubated with FC Receptor Block prior to staining. Cells were not fixed.



1x10⁶ human peripheral blood leukocytes were surface stained with 5 ul FITC Plus Anti-Human CD160 Rabbit RecAb (FITC-98111, Clone: 241415F2)(red) or FITC Plus Rabbit IgG Isotype Control RecAb (FITC-98136, Clone: 240953C9) (blue). Cells were incubated with FC Receptor Block prior to staining. Cells were not fixed.