

For Research Use Only

FITC Plus Anti-Human CD59 Rabbit Recombinant Antibody

Catalog Number: FITC-98099



Basic Information

Catalog Number:

FITC-98099

Concentration:

100 tests, 5 µl/test

Source:

Rabbit

Isotype:

IgG

GenBank Accession Number:

BC001506

GeneID (NCBI):

966

UNIPROT ID:

P13987

Full Name:

CD59 molecule, complement regulatory protein

Calculated MW:

19 kDa

Purification Method:

Protein A purification

CloneNo.:

241311A4

Excitation/Emission maxima wavelengths:

495 nm / 524 nm

Applications

Tested Applications:

FC

Species Specificity:

human

Background Information

CD59, also named as MIC11, MIN1, MIN2, MIN3, MSK21, M1RL, MAC1F, HRF20 and 1F5 antigen, is a cell surface molecule glycoprotein with MW 18-25 kDa. It acts as a determinant of proximal-distal cell identity. CD59 acts by binding to the C8 and/or C9 complements of the assembling membrane attack complex (MAC), thereby preventing incorporation of the multiple copies of C9 required for complete formation of the osmolytic pore. It is involved in signal transduction for T-cell activation complexed to a protein tyrosine kinase.

Storage

Storage:

Store at 2-8°C. Avoid exposure to light. Stable for one year after shipment.

Storage Buffer:

PBS with 0.09% sodium azide and 0.5% BSA, pH7.3

For technical support and original validation data for this product please contact:

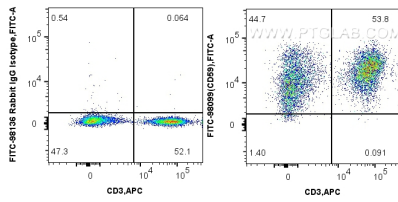
T: 4006900926

E: Proteintech-CN@ptglab.com

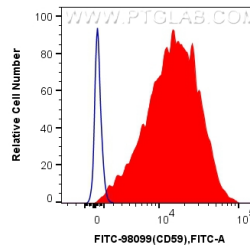
W: ptgcn.com

This product is exclusively available under Proteintech Group brand and is not available to purchase from any other manufacturer.

Selected Validation Data



1x10⁶ human PBMCs were surface stained with APC Anti-Human CD3 (OKT3), and 5 ul FITC Plus Anti-Human CD59 Rabbit RecAb (FITC-98099, Clone: 241311A4) or FITC Plus Rabbit IgG Isotype Control Recombinant Antibody (FITC-98136, Clone: 240953C9). Cells were incubated with FC Receptor Block prior to staining. Cells were not fixed.



1x10⁶ human PBMCs were surface stained with 5 ul FITC Plus Anti-Human CD59 Rabbit RecAb (FITC-98099, Clone: 241311A4) (red) or FITC Plus Rabbit IgG Isotype Control Recombinant Antibody (FITC-98136, Clone: 240953C9) (blue). Cells were incubated with FC Receptor Block prior to staining. Cells were not fixed.