

For Research Use Only

FITC Plus Anti-Human CLEC12A Rabbit Recombinant Antibody

Catalog Number: FITC-98083



Basic Information

Catalog Number:

FITC-98083

Concentration:

100 tests, 5 µl/test

Source:

Rabbit

Isotype:

IgG

Immunogen Catalog Number:

EG0024

GenBank Accession Number:

BC126291

GeneID (NCBI):

160364

UNIPROT ID:

Q5QGZ9

Full Name:

C-type lectin domain family 12, member A

Calculated MW:

31 kDa

Purification Method:

Protein A purification

CloneNo.:

240791B7

Recommended Dilutions:

FC: 5 µl per 10⁶ cells in a 100 µl suspension

Excitation/Emission maxima wavelengths:

495 nm / 524 nm

Applications

Tested Applications:

FC

Species Specificity:

human

Positive Controls:

FC : human peripheral blood leukocytes,

Background Information

CLEC12A, also known as CD371, MICL, DCAL-2 or CLL-1, is a type II transmembrane glycoprotein and a member of the C-type lectin superfamily (PMID: 30401586). This protein, which contains a single C-type lectin-like domain and a cytoplasmic immunoreceptor tyrosine-based inhibitory motif (ITIM), is related to LOX-1 and Dectin-1 and is variably spliced and highly N-glycosylated (PMID: 14739280). Its ITIM sequence recruits the tyrosine phosphatases SHP-1 and SHP-2 to negatively regulate Syk signaling. In humans, CLEC12A is mainly expressed on myeloid cells, being found on monocytes, granulocytes, macrophages and DC subsets, and at lower levels on CD4⁺ T cells (PMID: 32477350). The observed molecular weight of CLEC12A is between 40 and 75 kDa, which is much higher than the predicted molecular weight due to glycosylation (PMID: 14739280).

Storage

Storage:

Store at 2-8°C. Avoid exposure to light. Stable for one year after shipment.

Storage Buffer:

PBS with 0.09% sodium azide and 0.5% BSA, pH7.3

For technical support and original validation data for this product please contact:

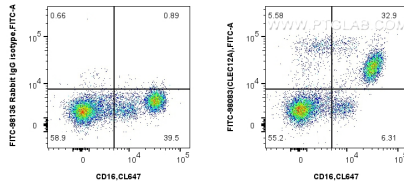
T: 4006900926

E: Proteintech-CN@ptglab.com

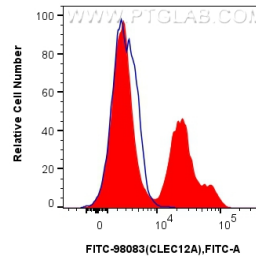
W: ptgcn.com

This product is exclusively available under Proteintech Group brand and is not available to purchase from any other manufacturer.

Selected Validation Data



1x10⁶ human peripheral blood leukocytes were surface stained with Coralite® Plus 647 Anti-Human CD16, and 5 ul FITC Plus Anti-Human CLEC12A Rabbit RecAb (FITC-98083, Clone: 240791B7) or FITC Plus Rabbit IgG Isotype Control RecAb (FITC-98136, Clone: 240953C9). Cells were incubated with FC Receptor Block prior to fixing and staining. Cells were not fixed.



1x10⁶ human peripheral blood leukocytes were surface stained with 5 ul FITC Plus Anti-Human CLEC12A Rabbit RecAb (FITC-98083, Clone: 240791B7) (red) or FITC Plus Rabbit IgG Isotype Control RecAb (FITC-98136, Clone: 240953C9) (blue). Cells were incubated with FC Receptor Block prior to fixing and staining. Cells were not fixed.