

For Research Use Only

# FITC Plus Anti-Human CD226 Rabbit Recombinant Antibody

Catalog Number: FITC-98002



## Basic Information

Catalog Number:

FITC-98002

Concentration:

100 tests, 5 µl/test

Source:

Rabbit

Isotype:

IgG

Immunogen Catalog Number:

EG0027

GenBank Accession Number:

BC074787

GeneID (NCBI):

10666

ENSEMBL Gene ID:

ENSG00000150637

UNIPROT ID:

Q15762

Full Name:

CD226 molecule

Calculated MW:

336 aa, 39 kDa

Purification Method:

Protein A purification

CloneNo.:

240673G4

Excitation/Emission maxima wavelengths:

495 nm / 524 nm

## Applications

Tested Applications:

FC

Species Specificity:

human

Positive Controls:

FC : human PBMCs,

## Background Information

CD226 (DNAM-1) is a ~65 kDa glycoprotein expressed on the surface of NK cells, platelets, monocytes and a subset of T cells. It is a member of the Ig-superfamily containing 2 Ig-like domains of the V-set. CD226 mediates cellular adhesion of platelets and megakaryocytic cells to vascular endothelial cells. The protein also plays a role in megakaryocytic cell maturation. Interactions of CD226 and its ligands, CD155 and CD112, induce NK and T cell-mediated cytotoxicity and cytokine secretion (PMID: 15039383).

## Storage

Storage:

Store at 2-8°C. Avoid exposure to light. Stable for one year after shipment.

Storage Buffer:

PBS with 0.09% sodium azide and 0.5% BSA, pH7.3

For technical support and original validation data for this product please contact:

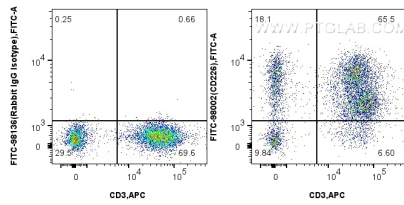
T: 4006900926

E: [Proteintech-CN@ptglab.com](mailto:Proteintech-CN@ptglab.com)

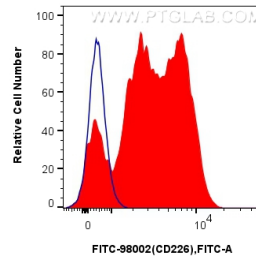
W: [ptgcn.com](http://ptgcn.com)

This product is exclusively available under Proteintech Group brand and is not available to purchase from any other manufacturer.

## Selected Validation Data



1x10<sup>6</sup> human PBMCs were surface stained with APC Anti-Human CD3, and 5 ul FITC Plus Anti-Human CD226 Rabbit RecAb (FITC-98002, Clone: 240673G4) or FITC Plus Rabbit IgG Isotype Control RecAb (FITC-98136, Clone: 240953C9). Cells were not fixed. Lymphocytes were gated.



1x10<sup>6</sup> human PBMCs were surface stained with 5 ul FITC Plus Anti-Human CD226 Rabbit RecAb (FITC-98002, Clone: 240673G4) (red) or FITC Plus Rabbit IgG Isotype Control RecAb (FITC-98136, Clone: 240953C9) (blue). Cells were not fixed. Lymphocytes were gated.