

For Research Use Only

FITC Plus Anti-Human CD35 (E11) Mouse IgG2a Recombinant Antibody

Catalog Number: FITC-65622



Basic Information

Catalog Number:

FITC-65622

Concentration:

100 tests, 5 µl/test

Source:

Mouse

Isotype:

IgG2a

GenBank Accession Number:

NM_000573

GeneID (NCBI):

1378

ENSEMBL Gene ID:

ENSG00000203710

Full Name:

complement component (3b/4b)
receptor 1 (Knops blood group)

Calculated MW:

224 kDa

Purification Method:

Protein A purification

CloneNo.:

E11

Recommended Dilutions:

FC: 5 µl per 10⁶ cells in 100 µl
suspension

Excitation/Emission maxima
wavelengths:

495 nm / 524 nm

Applications

Tested Applications:

FC

Species Specificity:

human

Positive Controls:

FC : human PBMCs,

Background Information

CD35, also known as complement receptor type 1 (CR1) or C3b/C4b receptor, is a single-chain glycoprotein consisting of 30 repeating homologous protein domains known as short consensus repeats (~60 amino acids each) followed by transmembrane and cytoplasmic domains (PMID: 8765013). CD35 is variably expressed by granulocytes, monocytes, B cells, some T cells, erythrocytes, follicular dendritic cells, Langerhans cells, and glomerular podocytes (PMID: 19004497). CD35 acts as a receptor for C3b and C4b and plays important roles in the regulation of the complement cascade and clearance of immune complexes.

Storage

Storage:

Store at 2-8°C. Avoid exposure to light. Stable for one year after shipment.

Storage Buffer:

PBS with 0.09% sodium azide and 0.5% BSA, pH7.3

For technical support and original validation data for this product please contact:

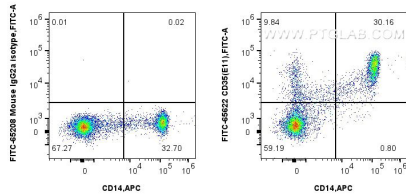
T: 4006900926

E: Proteintech-CN@ptglab.com

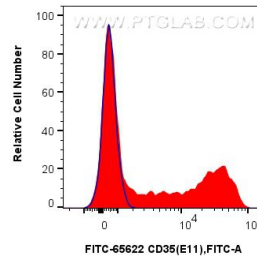
W: ptgcn.com

This product is exclusively available under Proteintech Group brand and is not available to purchase from any other manufacturer.

Selected Validation Data



1x10⁶ human PBMCs were surface stained with APC Anti-Human CD14 Rabbit Recombinant Antibody (APC-98040, Clone: 230332D7) and 5 ul FITC Plus Anti-Human CD35 (E11) Mouse IgG2a RecAb (FITC-65622, Clone:E11), or FITC Plus Mouse IgG2a Isotype Control (C1.18.4) (FITC-65208, Clone: C1.18.4). Cells were incubated with FC Receptor Block prior to staining. Cells were not fixed.



1x10⁶ human PBMCs were surface stained with 5 ul FITC Plus Anti-Human CD35 (E11) Mouse IgG2a RecAb (FITC-65622, Clone: E11) (red) or FITC Plus Mouse IgG2a Isotype Control (C1.18.4) (FITC-65208, Clone: C1.18.4) (blue). Cells were incubated with FC Receptor Block prior to staining. Cells were not fixed.