

For Research Use Only

FITC Plus Anti-Rat CD11b (OX42) Mouse IgG2a Recombinant Antibody

Catalog Number: FITC-65606



Basic Information

Catalog Number:

FITC-65606

Size:

100ug, 500 μ g/ml

Source:

Mouse

Isotype:

IgG2a

GenBank Accession Number:

NM_012711

GeneID (NCBI):

25021

Full Name:

integrin alpha M

Calculated MW:

127 kDa

Purification Method:

Protein A purification

CloneNo.:

OX42

Excitation/Emission maxima wavelengths:

495 nm / 524 nm

Applications

Tested Applications:

FC

Species Specificity:

rat

Background Information

Integrins are cell adhesion receptors that are heterodimers composed of non-covalently associated α and β subunits (PMID: 9779984). CD11b, also known as Integrin alpha M or CR3A, belongs to the integrin alpha chain family. CD11b forms an α / β heterodimer with CD18 (integrin β 2). CD11b/CD18 is implicated in various adhesive interactions of monocytes, macrophages and granulocytes as well as in mediating the uptake of complement-coated particles and pathogens (PMID: 9558116; 20008295). CD11b/CD18 is a receptor for the complement protein fragment iC3b, and is also a receptor for fibrinogen, factor X and ICAM1 (PMID: 2971974; 15485828).

Storage

Storage:

Store at 2-8°C. Avoid exposure to light. Stable for one year after shipment.

Storage Buffer:

PBS with 0.09% sodium azide.

For technical support and original validation data for this product please contact:

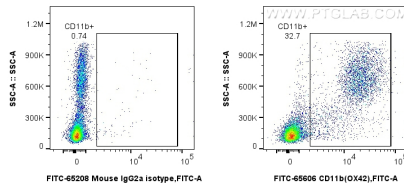
T: 4006900926

E: Proteintech-CN@ptglab.com

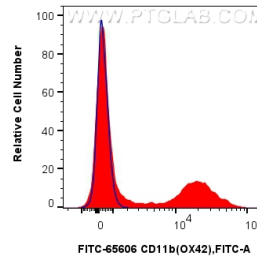
W: ptgcn.com

This product is exclusively available under Proteintech Group brand and is not available to purchase from any other manufacturer.

Selected Validation Data



1x10⁶ rat bone marrow cells were surface stained with 0.25 ug FITC Plus Anti-Rat CD11b (OX42) Mouse IgG2a RecAb (FITC-65606, Clone: OX42) or 0.25 ug FITC Plus Mouse IgG2a Isotype Control (C1.18.4) (FITC-65208, Clone: C1.18.4). Cells were not fixed.



1x10⁶ rat bone marrow cells were surface stained with 0.25 ug FITC Plus Anti-Rat CD11b (OX42) Mouse IgG2a RecAb (FITC-65606, Clone: OX42) (red), or 0.25 ug FITC Plus Mouse IgG2a Isotype Control (C1.18.4) (FITC-65208, Clone: C1.18.4) (blue). Cells were not fixed.