

# FITC Plus Anti-Human LRP1 (5A6) Rabbit IgG Recombinant Antibody

Catalog Number: **FITC-65546**

## Basic Information

**Catalog Number:**

FITC-65546

**Size:**

100 tests, 5 µl/test

**Source:**

Rabbit

**Isotype:**

IgG

**GenBank Accession Number:**

BC045107

**GeneID (NCBI):**

4035

**Full Name:**

low density lipoprotein-related  
protein 1 (alpha-2-macroglobulin  
receptor)

**Calculated MW:**

505 kDa

**Purification Method:**

Affinity purification

**CloneNo.:**

5A6

**Excitation/Emission maxima  
wavelengths:**

495 nm / 524 nm

## Applications

**Tested Applications:**

FC

**Species Specificity:**

Human

## Background Information

LRP1 (Prolow-density lipoprotein receptor-related protein 1), also known as A2MR, APOER and CD91, is a type I transmembrane protein that belongs to the LDLR family. LRP1 is synthesized as a transmembrane glycosylated precursor of 600 kDa, and is subsequently cleaved to generate a large 515-kDa N-terminal extracellular subunit and an 85-kDa C-terminal transmembrane subunit, which are noncovalently associated with one another (PMID: 2112085; 8546712). LRP1 is a multifunctional receptor involved in the clearance of a large number of diverse ligands and modulating various cellular processes. LRP1 is implicated in conditions such as atherosclerosis, cancer and neurodegenerative diseases (PMID: 28381441).

## Storage

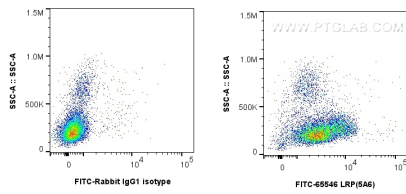
**Storage:**

Store at 2-8°C. Avoid exposure to light. Stable for one year after shipment.

**Storage Buffer:**

PBS with 0.09% sodium azide and 0.5% BSA.

## Selected Validation Data



1x10<sup>6</sup> human PBMCs were surface stained with 5 ul FITC Plus Anti-Human LRP1 Rabbit Recombinant Antibody (FITC-65546, Clone:5A6), or FITC-conjugated Rabbit IgG control (FITC-30000). Cells were incubated with FC Receptor Block prior to staining. Cells were not fixed.