

For Research Use Only

# FITC Plus Anti-Human CD68 (KP1) Mouse IgG1 Recombinant Antibody

Catalog Number: FITC-65521



## Basic Information

Catalog Number:

FITC-65521

Concentration:

100 tests, 5 µl/test

Source:

Mouse

Isotype:

IgG1

GenBank Accession Number:

BC015557

GeneID (NCBI):

968

UNIPROT ID:

P34810

Full Name:

CD68 molecule

Calculated MW:

37 kDa

Purification Method:

Affinity purification

CloneNo.:

KP1

Recommended Dilutions:

FC: 5 µl per 10<sup>6</sup> cells in 100 µl suspension

Excitation/Emission maxima wavelengths:

495 nm / 524 nm

## Applications

Tested Applications:

FC

Species Specificity:

human

Positive Controls:

FC : human PBMCs,

## Background Information

CD68 is a type I transmembrane glycoprotein that is highly expressed by human monocytes and tissue macrophages. It belongs to the lysosomal/endosomal-associated membrane glycoprotein (LAMP) family and primarily localizes to lysosomes and endosomes with a smaller fraction circulating to the cell surface. CD68 is also a member of the scavenger receptor family. It may play a role in phagocytic activities of tissue macrophages.

## Storage

Storage:

Store at 2-8°C. Avoid exposure to light. Stable for one year after shipment.

Storage Buffer:

PBS with 0.09% sodium azide and 0.5% BSA, pH7.3

For technical support and original validation data for this product please contact:

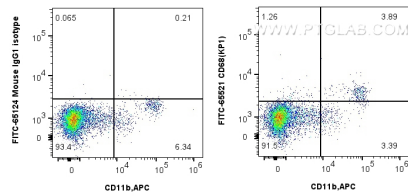
T: 4006900926

E: [Proteintech-CN@ptglab.com](mailto:Proteintech-CN@ptglab.com)

W: [ptgcn.com](http://ptgcn.com)

This product is exclusively available under Proteintech Group brand and is not available to purchase from any other manufacturer.

## Selected Validation Data



1x10<sup>6</sup> human PBMCs were surface stained with 5 ul FITC Plus Anti-Human CD68 Mouse Recombinant Antibody(FITC-65202, Clone:KP1), or FITC-Mouse IgG1 Isotype Control (MOPC-21) (FITC-65124, Clone: MOPC-21), and 5 ul APC Anti-Human CD11b (ICRF44) (APC-65116, Clone: ICRF44). Cells were not fixed.