

For Research Use Only

FITC Plus Anti-Human CD21 (BU32) Mouse IgG1 Recombinant Antibody



Catalog Number: FITC-65512

Basic Information

Catalog Number:

FITC-65512

Size:

100 tests, 5 µl/test

Source:

Mouse

Isotype:

IgG1

GenBank Accession Number:

BC090937

GeneID (NCBI):

1380

ENSEMBL Gene ID:

ENSG00000117322

UNIPROT ID:

P20023

Full Name:

complement component (3d/Epstein
Barr virus) receptor 2

Purification Method:

Affinity purification

CloneNo.:

BU32

Excitation/Emission maxima
wavelengths:

495 nm / 524 nm

Applications

Tested Applications:

FC

Species Specificity:

Human

Background Information

CD21, also known as complement receptor type 2 (CR2), complement C3d receptor, and Epstein-Barr virus receptor, is a transmembrane protein that contains a small cytoplasmic domain, a transmembrane region and an extracellular domain consisting of 15 tandem short consensus repeat sequences (PMID: 6230668; 2551147). It is expressed on B cells, follicular dendritic cells, thymocytes and a subset of peripheral T cells (PMID: 26119182). CD21 binds complement fragments C3d, C3dg and iC3b and acts as a receptor for the Epstein-Barr virus (PMID: 7753047). On B cells, together with CD19 and CD81, CD21 forms a complex that functions as a co-receptor to the BCR (PMID: 7542009). It is involved in B cells activation and functions.

Storage

Storage:

Store at 2-8°C. Avoid exposure to light. Stable for one year after shipment.

Storage Buffer:

PBS with 0.09% sodium azide and 0.5% BSA.

For technical support and original validation data for this product please contact:

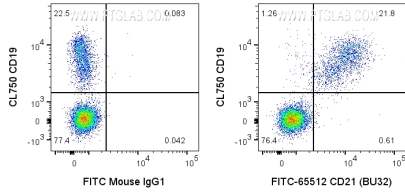
T: 4006900926

E: Proteintech-CN@ptglab.com

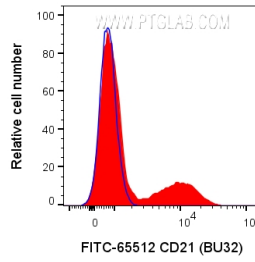
W: ptgcn.com

This product is exclusively available under Proteintech Group brand and is not available to purchase from any other manufacturer.

Selected Validation Data



1×10^6 human PBMCs were surface stained with CL750 Anti-Human CD19 and 5 μ l FITC Plus Anti-Human CD21 Mouse Recombinant Antibody (FITC-65512, Clone:BU32) or FITC Plus Mouse IgG1 Isotype Control. Cells were not fixed. Lymphocytes were gated.



1×10^6 human PBMCs were surface stained with 5 μ l FITC Plus Anti-Human CD21 Mouse Recombinant Antibody (FITC-65512, Clone:BU32) or FITC Plus Mouse IgG1 Isotype Control. Cells were not fixed. Lymphocytes were gated.