

For Research Use Only

# FITC Plus Anti-Human HLA-DR (L243)



Catalog Number: FITC-65218

1 Publications

## Basic Information

Catalog Number:

FITC-65218

Size:

100 tests, 5 µl/test

Source:

Mouse

Isotype:

IgG2a, kappa

GenBank Accession Number:

BC032350

GeneID (NCBI):

3122

ENSEMBL Gene ID:

ENSG00000204287

UNIPROT ID:

P01903

Full Name:

major histocompatibility complex, class II, DR alpha

Calculated MW:

254 aa, 29 kDa

Purification Method:

Protein A purification

CloneNo.:

L243

Excitation/Emission maxima wavelengths:

495 nm / 524 nm

## Applications

Tested Applications:

FC

Cited Applications:

FC

Species Specificity:

Human

Cited Species:

human

## Background Information

### Notable Publications

Author	Pubmed ID	Journal	Application
Qingxi Qu	36359787	Cells	FC

## Storage

Storage:

Store at 2-8°C. Avoid exposure to light. Stable for one year after shipment.

Storage Buffer:

PBS with 0.09% sodium azide and 0.5% BSA.

For technical support and original validation data for this product please contact:

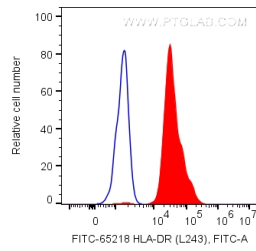
T: 4006900926

E: Proteintech-CN@ptglab.com

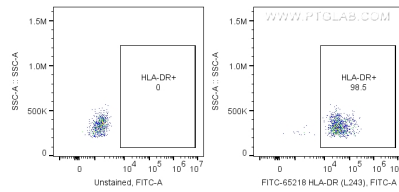
W: ptgcn.com

This product is exclusively available under Proteintech Group brand and is not available to purchase from any other manufacturer.

## Selected Validation Data



1X10<sup>6</sup> human PBMCs were surface stained with 5 ul FITC Plus Anti-Human HLA-DR (FITC-65218, Clone: L243). Cells were not fixed. Monocytes were gated.



1X10<sup>6</sup> human PBMCs were surface stained with 5 ul FITC Plus Anti-Human HLA-DRA (FITC-65218, Clone:L243). Cells were not fixed .