

For Research Use Only

FITC Plus Rat IgG2b Isotype Control (LTF-2)

Catalog Number: FITC-65211

1 Publications



Basic Information

Catalog Number:

FITC-65211

GenBank Accession Number:

GeneID (NCBI):

Purification Method:

Affinity purification

Size:

100ug, 0.5 mg/mL

Full Name:

CloneNo.:

LTF-2

Source:

Rat

Excitation/Emission maxima wavelengths:

495 nm / 524 nm

Isotype:

IgG2b, kappa

Applications

Tested Applications:

FC

Cited Applications:

FC

Species Specificity:

Background Information

The LTF-2 immunoglobulin is useful as an isotype-matched control. The LTF-2 immunoglobulin has an unknown binding specificity and is used as an isotype control for rat IgG2b antibodies. This antibody has been quality-tested for flow cytometry as negative control.

Notable Publications

Author	Pubmed ID	Journal	Application
Yuri Aono	38857232	PLoS One	FC

Storage

Storage:

Store at 2-8°C. Avoid exposure to light. Stable for one year after shipment.

Storage Buffer:

PBS with 0.09% sodium azide.

For technical support and original validation data for this product please contact:

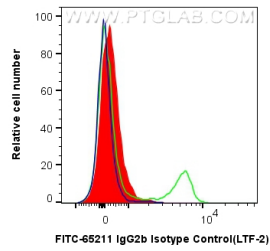
T: 4006900926

E: Proteintech-CN@ptglab.com

W: ptgcn.com

This product is exclusively available under Proteintech Group brand and is not available to purchase from any other manufacturer.

Selected Validation Data



1X10⁶ mouse splenocytes were surface stained with 0.25 ug FITC Plus Rat IgG2b Isotype Control (FITC-65211, Clone:LTF-2) (red) or 0.25 ug FITC Plus Anti-Mouse CD4 (GK1.5) (green) or unstained (blue). Cells were not fixed.