

FITC Plus Anti-Human CD2 (TS1/8)

Catalog Number: FITC-65192

Basic Information

Catalog Number:

FITC-65192

Size:

100 tests, 5 µl/test

Source:

Mouse

Isotype:

IgG1, kappa

GenBank Accession Number:

BC033583

GeneID (NCBI):

914

ENSEMBL Gene ID:

ENSG00000116824

UNIPROT ID:

P06729

Full Name:

CD2 molecule

Calculated MW:

351 aa, 39 kDa

Purification Method:

Affinity purification

CloneNo.:

TS1/8

Excitation/Emission maxima
wavelengths:

495 nm / 524 nm

Applications

Tested Applications:

FC

Species Specificity:

Human

Background Information

CD2 is a cell surface glycoprotein present on a majority of thymocytes, all mature T cells and subset of NK cells but not on B lymphocytes. It is a pan T-cell marker. CD2 interacts with lymphocyte function-associated antigen (LFA-3/CD58) and CD48/BCM1 to mediate adhesion between T-cells and other cell types. CD2 is implicated in the triggering of T-cells, the cytoplasmic domain is implicated in the signaling function.

Storage

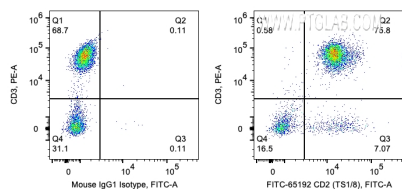
Storage:

Store at 2-8°C. Avoid exposure to light. Stable for one year after shipment.

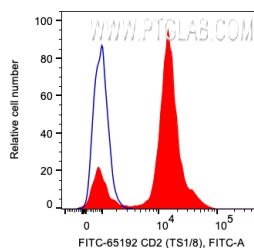
Storage Buffer:

PBS with 0.09% sodium azide and 0.5% BSA.

Selected Validation Data



1X10⁶ human PBMCs were surface co-stained with PE Anti-Human CD3 and 5 ul FITC Plus Anti-Human CD2 (FITC-65192, Clone: TS1/8) or Mouse IgG1 Isotype Control. Cells were not fixed. Lymphocytes were gated.



1X10⁶ human PBMCs were surface stained with 5 ul FITC Plus Anti-Human CD2 (FITC-65192, Clone: TS1/8) or Mouse IgG1 Isotype Control. Cells were not fixed. Lymphocytes were gated.