

## FITC Plus Anti-Human CD29 (TS2/16)

Catalog Number: FITC-65191

## Basic Information

## Catalog Number:

FITC-65191

## Size:

100 tests, 5 µl/test

## Source:

Mouse

## Isotype:

IgG1, kappa

## GenBank Accession Number:

BC020057

## GeneID (NCBI):

3688

## ENSEMBL Gene ID:

ENSG00000150093

## UNIPROT ID:

P05556

## Full Name:

integrin, beta 1 (fibronectin receptor,  
beta polypeptide, antigen CD29  
includes MDF2, MSK12)

## Calculated MW:

88 kDa

## Purification Method:

Affinity purification

## CloneNo.:

TS2/16

Excitation/Emission maxima  
wavelengths:

495 nm / 524 nm

## Applications

## Tested Applications:

FC

## Species Specificity:

Human

## Background Information

Integrin beta-1 (ITGB1), also named as CD29, is a 130 kDa single chain type I glycoprotein that is expressed in a heterodimeric complex with one of six distinct  $\alpha$  subunits, comprising the very late activation antigen (VLA) subfamily of adhesion receptors. It is one of the essential surface molecules expressed on human MSC from bone marrow and other sources. The  $\beta$  1 subunit is also broadly expressed on lymphocytes and monocytes, weakly expressed on granulocytes, and not expressed on erythrocytes. These receptors are involved in a variety of cell-cell and cell-matrix interactions.

## Storage

## Storage:

Store at 2-8°C. Avoid exposure to light. Stable for one year after shipment.

## Storage Buffer:

PBS with 0.09% sodium azide and 0.5% BSA.

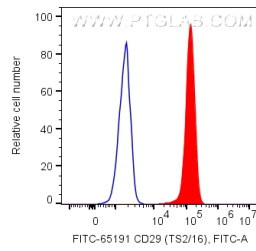
For technical support and original validation data for this product please contact:

T: 4006900926

E: [Proteintech-CN@ptglab.com](mailto:Proteintech-CN@ptglab.com)W: [ptgcn.com](http://ptgcn.com)

This product is exclusively available under Proteintech Group brand and is not available to purchase from any other manufacturer.

## Selected Validation Data



1X10<sup>6</sup> human PBMCs were surface stained with 5 ul FITC Plus Anti-Human CD29 (FITC-65191, Clone: TS2/16). Cells were not fixed. Monocytes were gated.