

# FITC Anti-Human CD314/NKG2D (1D11)

Catalog Number: **FITC-65188**

## Basic Information

**Catalog Number:**

FITC-65188

**Size:**

100 tests, 5 µl/test

**Source:**

Mouse

**Isotype:**

IgG1, kappa

**GenBank Accession Number:**

BC039836

**GeneID (NCBI):**

22914

**UNIPROT ID:**

P26718

**Full Name:**

killer cell lectin-like receptor subfamily K, member 1

**Calculated MW:**

25 kDa

**Purification Method:**

The purified antibody is conjugated with fluorescein isothiocyanate (FITC) under optimum conditions. The conjugate is purified by size-exclusion chromatography.

**CloneNo.:**

1D11

**Excitation/Emission maxima wavelengths:**

498 nm / 526 nm

## Applications

**Tested Applications:**

FC

**Species Specificity:**

Human

## Background Information

CD314, also known as NKG2D or Killer cell lectin-like receptor subfamily K member 1 (KLRL1), is a type II lectin-like transmembrane stimulatory receptor (PMID: 8436421). In humans, it is expressed on NK cells, gamma delta T cells, and CD8+ alpha beta T cells (PMID: 10426993). Various families of cell surface ligands have been identified, including the MIC A/MIC B and ULBP proteins (PMID: 12150888). CD314 is involved in both innate and adaptive immunities, and the NKG2D/NKG2DL pathway involves multiple effector cell types for controlling tumor progression (PMID: 31720075).

## Storage

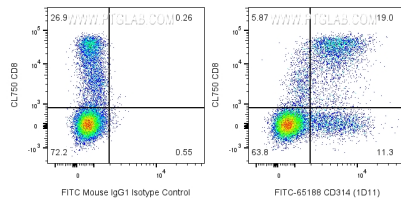
**Storage:**

Store at 2-8°C. Avoid exposure to light. Stable for one year after shipment.

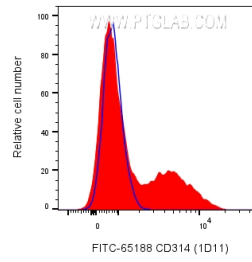
**Storage Buffer:**

PBS with 0.09% sodium azide and 0.5% BSA.

## Selected Validation Data



1x10<sup>6</sup> human PBMCs were surface stained with CL750 Anti-Human CD8 and FITC Plus Anti-Human CD314/NKG2D (FITC-65188, Clone:1D11) or FITC Plus Mouse IgG1 Isotype Control. Cells were not fixed. Lymphocytes were gated.



1x10<sup>6</sup> human PBMCs were surface stained with FITC Plus Anti-Human CD314/NKG2D (FITC-65188, Clone:1D11) or FITC Plus Mouse IgG1 Isotype Control. Cells were not fixed. Lymphocytes were gated.