

For Research Use Only

FITC Plus Anti-Human CD146/MCAM (P1H12)

Catalog Number: FITC-65181



Basic Information

Catalog Number: FITC-65181	GenBank Accession Number: BC056418	Purification Method: Affinity purification
Concentration: 100 tests, 5 µl/test	GeneID (NCBI): 4162	CloneNo.: P1H12
Source: Mouse	UNIPROT ID: P43121	Recommended Dilutions: FC: 5 µl per 10 ⁶ cells in 100 µl suspension
Isotype: IgG1, kappa	Full Name: melanoma cell adhesion molecule	Excitation/Emission maxima wavelengths: 495 nm / 524 nm
	Calculated MW: 646 aa, 72 kDa	

Applications

Tested Applications: FC	Positive Controls: FC : A375 cells,
Species Specificity: human, mouse, rabbit, canine	

Background Information

CD146, also known as melanoma cell adhesion molecule (MCAM) or MUC18, originally identified as a biomarker of melanoma progression, is a transmembrane glycoprotein of 113-130 kDa, belonging to the immunoglobulin (Ig) superfamily (PMID: 8378324; 25993332). Structurally, it consists of five Ig domains, a transmembrane domain, and a cytoplasmic region. In normal adult tissue, CD146 is primarily expressed by vascular endothelium and smooth muscle. CD146 is a key cell adhesion protein in vascular endothelial cell activity and angiogenesis, and has been used as marker of circulating endothelium cells (CECs) (PMID: 19356677). In addition to the membrane-anchored form of CD146, a soluble form of CD146 (sCD146, 105 kDa) has also been found in human plasma and in the supernatant of cultured human endothelial cells (PMID: 9462829; 19229070; 16374253; 14597988).

Storage

Storage:
Store at 2-8°C. Avoid exposure to light. Stable for one year after shipment.
Storage Buffer:
PBS with 0.09% sodium azide and 0.5% BSA, pH7.3

For technical support and original validation data for this product please contact:

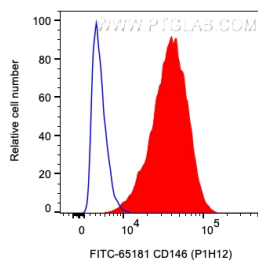
T: 4006900926

E: Proteintech-CN@ptglab.com

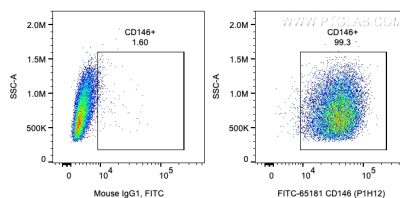
W: ptgcn.com

This product is exclusively available under Proteintech Group brand and is not available to purchase from any other manufacturer.

Selected Validation Data



1X10⁶ A375 cells were surface stained with 5 ul FITC Plus Anti-Human CD146 (FITC-65181, Clone: P1H12) (red) or Mouse IgG1 Isotype Control. Cells were not fixed.



1X10⁶ A375 cells were surface stained with 5 ul FITC Plus Anti-Human CD146 (FITC-65181, Clone: P1H12) or Mouse IgG1 Isotype Control. Cells were not fixed.