

For Research Use Only

FITC Anti-Human CD8a (RPA-T8)

Catalog Number: FITC-65144



Basic Information

Catalog Number: FITC-65144	GenBank Accession Number: BC025715	Purification Method: Affinity purification
Size: 100tests, 5 µl/test	GeneID (NCBI): 925	CloneNo.: RPA-T8
Source: Mouse	ENSEMBL Gene ID: ENSG00000153563	Excitation/Emission maxima wavelengths: 498 nm / 526 nm
Isotype: IgG1, kappa	UNIPROT ID: P01732	
	Full Name: CD8a molecule	
	Calculated MW: 235 aa, 26 kDa	

Applications

Tested Applications:
FC

Species Specificity:
Human

Background Information

CD8 is a transmembrane glycoprotein composed of two disulfide-linked chains. It can be present as a homodimer of CD8 α or as a heterodimer of CD8 α and CD8 β (PMID: 3264320; 8253791). CD8 is found on most thymocytes. The majority of class I-restricted T cells express mostly the CD8 α β heterodimer while CD8 α α homodimers alone have been found on some gut intraepithelial T cells, on some T cell receptor (TCR) γ δ T cells and on NK cells (PMID: 2111591; 1831127; 8420975). CD8 acts as a co-receptor that binds to MHC class-I and participates in cytotoxic T cell activation (PMID: 8499079). During T cell development, CD8 is required for positive selection of CD4-/CD8+ T cells (PMID: 1968084).

Storage

Storage:
Store at 2-8°C. Avoid exposure to light. Stable for one year after shipment.

Storage Buffer:
Phosphate based buffer with 0.09% sodium azide and 0.1% gelatin, pH 7.2.

For technical support and original validation data for this product please contact:

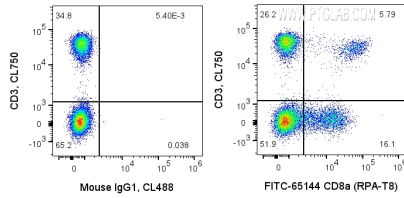
T: 4006900926

E: Proteintech-CN@ptglab.com

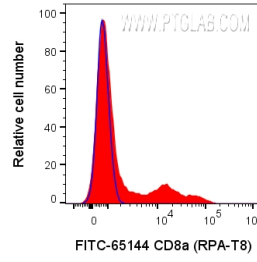
W: ptgcn.com

This product is exclusively available under Proteintech Group brand and is not available to purchase from any other manufacturer.

Selected Validation Data



1X10⁶ human PBMCs were surface stained with CL750 Anti-Human CD3 and 5 ul CoraLite® Plus 488 Anti-Human CD8a (CL488-65144, Clone:RPA-T8), or Mouse IgG1 Isotype Control. Cells were not fixed. Lymphocytes were gated.



1X10⁶ human PBMCs were surface stained with 5 ul FITC Anti-Human CD8a (FITC-65144, Clone:RPA-T8), or Mouse IgG1 Isotype Control. Cells were not fixed. Lymphocytes were gated.