

For Research Use Only

FITC Plus Anti-Mouse CD4 (GK1.5)

Catalog Number: FITC-65104 9 Publications



Basic Information

| | | |
|-------------------------------|---------------------------------------|---|
| Catalog Number: FITC-65104 | GenBank Accession Number: BC039137 | Purification Method: Affinity purification |
| Size: 100ug, 500 µg/ml | GeneID (NCBI): 12504 | CloneNo.: GK1.5 |
| Source: Rat | UNIPROT ID: P06332 | Excitation/Emission maxima wavelengths: 495 nm / 524 nm |
| Isotype: IgG2b, kappa | Full Name: CD4 antigen | |

Applications

Tested Applications:
FC

Cited Applications:
FC

Species Specificity:
Mouse

Cited Species:
mouse

Background Information

CD4 is a 55-kDa transmembrane glycoprotein expressed on T helper cells, majority of thymocytes, monocytes, macrophages, and dendritic cells (PMID: 9304802; 12213222). CD4 is an accessory protein for MHC class-II antigen/T-cell receptor interaction. It plays an important role in T helper cell development and activation (PMID: 9539765; 3112582). CD4 serves as a receptor for the human immunodeficiency virus (HIV) (PMID: 9304802).

Notable Publications

| Author | Pubmed ID | Journal | Application |
|----------|-----------|----------------|-------------|
| Lan Wu | 36483681 | Stem Cells Int | FC |
| Lian Zhu | 36321642 | J Mater Chem B | FC |
| Li Wu | 35344716 | Phytomedicine | FC |

Storage

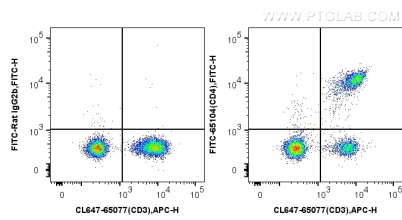
Storage:
Store at 2-8°C. Avoid exposure to light. Stable for one year after shipment.

Storage Buffer:
PBS with 0.09% sodium azide.

For technical support and original validation data for this product please contact:
T: 4006900926 E: Proteintech-CN@ptglab.com W: ptgcn.com

This product is exclusively available under Proteintech Group brand and is not available to purchase from any other manufacturer.

Selected Validation Data



1X10⁶ mouse splenocytes were surface stained with CoraLite® Plus 647 Anti-Mouse CD3 (17A2) (CL647-65077, Clone: 17A2) and 0.5 ug FITC Plus Anti-Mouse CD4 (FITC-65104, Clone: GK1.5) or 0.5 ug FITC Plus rat IgG2b isotype control. Cells were not fixed.