

# FITC Plus Anti-Mouse KLRG1 (2F1)

Catalog Number: FITC-65084

## Basic Information

Catalog Number:

FITC-65084

Size:

100ug, 0.5 mg/ml

Source:

Golden Syrian Hamster

Isotype:

IgG

GenBank Accession Number:

BC101953

GeneID (NCBI):

50928

UNIPROT ID:

O88713

Full Name:

killer cell lectin-like receptor  
subfamily G, member 1

Purification Method:

Affinity purification

CloneNo.:

2F1

Excitation/Emission maxima  
wavelengths:

495 nm / 524 nm

## Applications

Tested Applications:

FC

Species Specificity:

Mouse

## Background Information

KLRG1 (killer cell lectin-like receptor subfamily G, member 1) is a C-type lectin inhibitory receptor that contains an immunoreceptor tyrosine-based inhibitory motif (ITIM) in its cytoplasmic domain. KLRG1 is expressed by subsets of NK and T cells, existing both as a monomer and as a disulfide-linked homodimer (PMID: 10741410; 19604491). It is considered to be a cell differentiation marker for NK and T cells and is strongly induced by viral and other infections (PMID: 20373518). Through interactions with members of the cadherin family, KLRG1 plays an inhibitory role on NK- and T-cell function (PMID: 19009530; 20373518).

## Storage

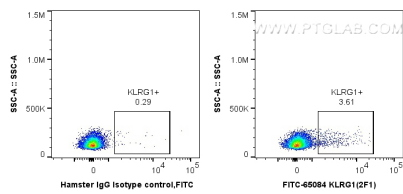
Storage:

Store at 2-8°C. Avoid exposure to light. Stable for one year after shipment.

Storage Buffer:

PBS with 0.09% sodium azide.

## Selected Validation Data



1X10<sup>6</sup> mouse splenocytes were surface stained with 0.5 ug FITC Plus Anti-Mouse KLRG1 (FITC-65084, Clone:2F1), or 0.5 ug Isotype Control. Cells were not fixed.