

For Research Use Only

# FITC Anti-Mouse ICAM-1/CD54 (YN1/1.7.4)

Catalog Number: FITC-65066



## Basic Information

<b>Catalog Number:</b> FITC-65066	<b>GenBank Accession Number:</b> BC008626	<b>Purification Method:</b> Affinity purification
<b>Concentration:</b> 500ug, 0.5 mg/ml	<b>GeneID (NCBI):</b> 15894	<b>CloneNo.:</b> YN1/1.7.4
<b>Source:</b> Rat	<b>UNIPROT ID:</b> P13597	<b>Excitation/Emission maxima wavelengths:</b> 498 nm / 526 nm
<b>Isotype:</b> IgG2b, kappa	<b>Full Name:</b> intercellular adhesion molecule 1	

## Applications

<b>Tested Applications:</b> FC	<b>Positive Controls:</b> FC : mouse splenocytes,
<b>Species Specificity:</b> mouse	

## Background Information

ICAM-1 (CD54) is a 90-kDa transmembrane glycoprotein of the immunoglobulin superfamily and is critical for the firm attachment and transmigration of leukocytes out of blood vessels and into tissues (PMID: 19307690). ICAM-1 is expressed by several cell types, typically on endothelial cells and cells of the immune system, and its expression can be up-regulated by various stimuli, including TNF- $\alpha$ , INF- $\gamma$ , IL-1 and thrombin (PMID: 3086451; 9694714; 15979056). It is a ligand for LFA-1 and Mac-1, serves as a receptor for rhinovirus, and is one of several receptors used by Plasmodium falciparum (PMID: 2566624; 2538244; 2475784).

## Storage

**Storage:**  
Store at 2-8°C. Avoid exposure to light. Stable for one year after shipment.  
**Storage Buffer:**  
PBS with 0.09% sodium azide, pH7.3

For technical support and original validation data for this product please contact:

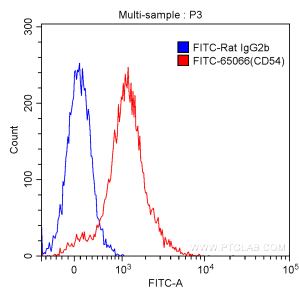
T: 4006900926

E: [Proteintech-CN@ptglab.com](mailto:Proteintech-CN@ptglab.com)

W: [ptgcn.com](http://ptgcn.com)

This product is exclusively available under Proteintech Group brand and is not available to purchase from any other manufacturer.

## Selected Validation Data



1X10<sup>6</sup> C57BL/6 mouse splenocytes were surface stained with 1.00 ug FITC Anti-Mouse CD54 (FITC-65066, Clone: YN1/1.7.4) (red) or 1.00 ug isotype control antibody (blue). Cells were not fixed.