

For Research Use Only

Recombinant Human EMB protein (rFc Tag)



Catalog Number: Eg6407

Basic Information

Species:
Human

Purity:
>90 %, SDS-PAGE

Tag:
rFc Tag

Technical Specifications

Purity:

>90 %, SDS-PAGE

Endotoxin Level:

<0.1 EU/ μ g protein, LAL method

Source:

HEK293-derived Human EMB protein Asp33-Pro260 (Accession# Q6PCB8) with a rabbit IgG Fc tag at the C-terminus.

GeneID:

133418

Accession:

Q6PCB8

Predicted Molecular Mass:

51.4 kDa

SDS-PAGE:

60-90 kDa, reducing (R) conditions

Formulation:

Lyophilized from 0.22 μ m filtered solution in PBS, pH 7.4. Normally 5% trehalose and 5% mannitol are added as protectants before lyophilization.

Biological Activity

Not tested

Storage and Shipping

Storage:

It is recommended that the protein be aliquoted for optimal storage. Avoid repeated freeze-thaw cycles.

- Until expiry date, -20°C to -80°C as lyophilized proteins.
- 3 months, -20°C to -80°C under sterile conditions after reconstitution.

Shipping:

The product is shipped at ambient temperature. Upon receipt, store it immediately at the recommended temperature.

Reconstitution

Briefly centrifuge the tube before opening. Reconstitute at 0.1-0.5 mg/mL in sterile water.

Background

The transmembrane glycoprotein embigin (EMB) belongs to the immunoglobulin superfamily (IgSF) and a number of IgSF members have been identified as biomarkers for cancer progression. EMB has been widely known as developmentally expressed protein that is involved in prostate and mammary gland development and in the early stages of mouse embryogenesis.

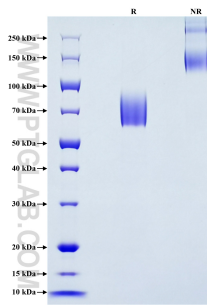
References

1. Chao, Fengmei et al. Oncotarget vol. 6,27 (2015): 23496-509.
2. Ruma, I Made Winarsa et al. Cancers (Basel), vol. 10,7 (2018) 239.
3. Xu, Binghong et al. Cell Rep. vol. 40,11 (2022): 111343.

Synonyms

Embigin, embigin homolog (mouse)

Selected Validation Data



Purity of Recombinant Human EMB was determined by SDS-PAGE. The protein was resolved in an SDS-PAGE in reducing (R) and non-reducing (NR) conditions and stained using Coomassie blue.

For technical support and original validation data for this product please contact

T: 027-87531629

E: Proteintech-CN@ptglab.com

W: ptgcn.com

This product is exclusively available under Proteintech Group brand and is not available to purchase from any other manufacturer.