

For Research Use Only

# Recombinant Human LTBR protein (rFc Tag)



Catalog Number: Eg5126

## Basic Information

**Species:**  
Human

**Purity:**  
>90 %, SDS-PAGE

**Tag:**  
rFc Tag

## Technical Specifications

**Purity:**  
>90 %, SDS-PAGE

**Endotoxin Level:**  
<0.1 EU/  $\mu$ g protein, LAL method

**Source:**  
HEK293-derived Human LTBR protein Gln31-Met227(Accession#P36941-1) with a rabbit IgG Fc tag at the C-terminus.

**GeneID:**  
4055

**Accession:**  
P36941-1

**Predicted Molecular Mass:**  
48.1 kDa

**SDS-PAGE:**  
52-65 kDa, reducing (R) conditions

**Formulation:**  
Lyophilized from 0.22  $\mu$ m filtered solution in PBS, pH 7.4. Normally 5% trehalose and 5% mannitol are added as protectants before lyophilization.

## Biological Activity

Not tested

## Storage and Shipping

### Storage:

It is recommended that the protein be aliquoted for optimal storage. Avoid repeated freeze-thaw cycles.

- Until expiry date, -20°C to -80°C as lyophilized proteins.
- 3 months, -20°C to -80°C under sterile conditions after reconstitution.

### Shipping:

The product is shipped at ambient temperature. Upon receipt, store it immediately at the recommended temperature.

## Reconstitution

Briefly centrifuge the tube before opening. Reconstitute at 0.1-0.5 mg/mL in sterile water.

## Background

Lymphotoxin-beta receptor (LTBR) is a receptor for the heterotrimeric lymphotoxin containing LTA and LTB, and for TNFS14/LIGHT. It can activate the NF-kappa-B signaling pathway upon stimulation with lymphotoxin (LTA1-LTB2). LTBR is constitutively expressed on stromal cells and myeloid lineage cells but not on T or B lymphocytes, which may be a novel immune checkpoint of tumor-associated macrophages.

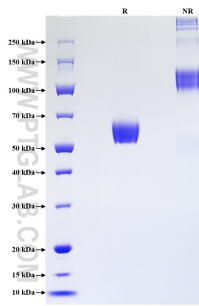
## References

1. Sudhamsu, Jawahar et al. Proceedings of the National Academy of Sciences of the United States of America vol. : 29,36 (2010): 5006-18.
2. Wolf, M J et al. Oncogene vol. 29,36 (2010): 5006-18.
3. Wang, Liang et al. Meta vol. 3,5 (2024): e233.

## Synonyms

D125370, LT BETA R, Lymphotoxin beta receptor, Lymphotoxin-beta receptor, TNF R III

## Selected Validation Data



Purity of Recombinant Human LTBR was determined by SDS-PAGE. The protein was resolved in an SDS-PAGE in reducing (R) and non-reducing (NR) conditions and stained using Coomassie blue.

For technical support and original validation data for this product please contact

T: 027-87531629

E: [Proteintech-CN@ptglab.com](mailto:Proteintech-CN@ptglab.com)

W: [ptgcn.com](http://ptgcn.com)

This product is exclusively available under Proteintech Group brand and is not available to purchase from any other manufacturer.