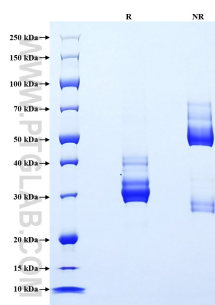


Recombinant Mouse CXCL10/IP-10 protein (rFc Tag) (HPLC verified)

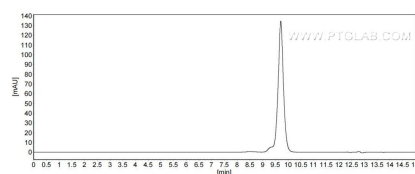
Catalog Number: Eg5063

Basic Information	Species: Mouse	Purity: >90 %, SDS-PAGE >90 %, SEC-HPLC	Tag: rFc Tag
Technical Specifications	Purity: >90 %, SDS-PAGE >90 %, SEC-HPLC Endotoxin Level: <0.1 EU/ µg protein, LAL method Source: HEK293-derived Mouse CXCL10 protein Ile22-Pro98 (Accession# Q548V9) with a rabbit IgG Fc tag at the C-terminus GeneID: 15945 Accession: Q548V9 Predicted Molecular Mass: 35.0 kDa SDS-PAGE: 28-35 kDa, reducing (R) conditions Formulation: Lyophilized from 0.22 µm filtered solution in PBS, pH 7.4. Normally 5% trehalose and 5% mannitol are added as protectants before lyophilization.		
Biological Activity	Not tested		
Storage and Shipping	Storage: It is recommended that the protein be aliquoted for optimal storage. Avoid repeated freeze-thaw cycles. <ul style="list-style-type: none">• Until expiry date, -20°C to -80°C as lyophilized proteins.• 3 months, -20°C to -80°C under sterile conditions after reconstitution. Shipping: The product is shipped at ambient temperature. Upon receipt, store it immediately at the recommended temperature.		
Reconstitution	Briefly centrifuge the tube before opening. Reconstitute at 0.1-0.5 mg/mL in sterile water.		
Background	CXCL10 (also known as IP-10) is a member of the CXC chemokine family which binds to the CXCR3 receptor to exert its biological effects. CXCL10 is a 12-kDa protein and constitutes two internal disulfide cross bridges. The predicted signal peptidase cleavage generates a 10-kDa secreted polypeptide with four conserved cysteine residues in the N-terminal. The CXCL10 gene localizes on chromosome 4 at band q21, a locus associated with an acute monocytic/B-lymphocyte lineage leukemia exhibiting translocation of t(4; 11)(q21; q23). CXCL10 mediates leukocyte trafficking, adaptive immunity, inflammation, haematopoiesis and angiogenesis. Under proinflammatory conditions CXCL10 is secreted from a variety of cells, such as leukocytes, activated neutrophils, eosinophils, monocytes, epithelial cells, endothelial cells, stromal cells (fibroblasts) and keratinocytes in response to IFN-γ.		
References	<ol style="list-style-type: none">1.Liu M. etal. (2011). Oncol Lett. 2(4):583-589.2.Walser TC. etal. (2006). Cancer Res. 66(15):7701-7.3.Luster AD. et al. (1987). J ExpMed. 166(4):1084-97.4.Lo BK. etal. (2010). Am JPathol. 176(5):2435-46.5.GroomJR.Etal. (2011). ImmunolCe lBiol. 89(2):207-15.		
Synonyms	10 kDa interferon gamma-induced protein, C7, Crg2, C-X-C motif chemokine 10, Cxcl10		

Selected Validation Data



Purity of Recombinant Mouse CXCL10 was determined by SDS-PAGE. The protein was resolved in an SDS-PAGE in reducing (R) and non-reducing (NR) conditions and stained using Coomassie blue.



The purity of Mouse CXCL10 was greater than 90% as determined by SEC-HPLC.

For technical support and original validation data for this product please contact

T: 027-87531629

E: Proteintech-CN@ptglab.com

W: ptgcn.com

This product is exclusively available under Proteintech Group brand and is not available to purchase from any other manufacturer.