

For Research Use Only

# Recombinant Human CLEC5A protein (rFc Tag)(HPLC verified)



Catalog Number: Eg5030

## Basic Information

**Species:**  
Human

**Purity:**  
>90 %, SDS-PAGE<br>>90%,  
SEC-HPLC

**Tag:**  
rFc Tag

## Technical Specifications

**Purity:**  
>90 %, SDS-PAGE<br>>90%, SEC-HPLC

**Endotoxin Level:**  
<0.1 EU/  $\mu$ g protein, LAL method

**Source:**  
HEK293-derived Human CLEC5A protein Pro28-Lys188 (Accession# Q9NY25-1) with a rabbit IgG Fc tag at the N-terminus.

**GeneID:**  
23601

**Accession:**  
Q9NY25-1

**Predicted Molecular Mass:**  
45.6 kDa

**SDS-PAGE:**  
50-70 kDa, reducing (R) conditions

**Formulation:**  
Lyophilized from 0.22  $\mu$ m filtered solution in PBS, pH 7.4. Normally 5% trehalose and 5% mannitol are added as protectants before lyophilization.

## Biological Activity

Not tested

## Storage and Shipping

### Storage:

It is recommended that the protein be aliquoted for optimal storage. Avoid repeated freeze-thaw cycles.

- Until expiry date, -20°C to -80°C as lyophilized proteins.
- 3 months, -20°C to -80°C under sterile conditions after reconstitution.

### Shipping:

The product is shipped at ambient temperature. Upon receipt, store it immediately at the recommended temperature.

## Reconstitution

Briefly centrifuge the tube before opening. Reconstitute at 0.1-0.5 mg/mL in sterile water.

## Background

CLEC5A is critical for dengue-virus-induced lethal disease, and interacts with the dengue virion directly and thereby brings about DAP12 phosphorylation. CLEC5A is critical to regulate NLRP3 inflammasome activation in DV infection and that the blockade of CLEC5A would be helpful to alleviate clinical symptoms in dengue patients. CLEC5A has a pivotal function in the activation of multiple aspects of innate immunity against bacterial invasion.

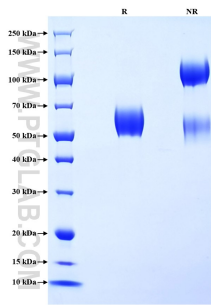
## References

1. Chen ST, et al. (2008). Nature. 453(7195):672-6.
2. Wu MF, et al. (2013). Blood. 121(1):95-106.
3. Chen ST, et al. (2017). Nat Commun. 8(1):299.

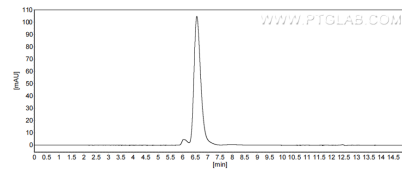
## Synonyms

CLECSF5, C-type lectin domain family 5 member A, C-type lectin superfamily member 5, MDL 1, MDL1

## Selected Validation Data



Purity of Recombinant Human CLEC5A was determined by SDS-PAGE. The protein was resolved in an SDS-PAGE in reducing (R) and non-reducing (NR) conditions and stained using Coomassie blue.



The purity of Human CLEC5A was greater than 90% as determined by SEC-HPLC.

For technical support and original validation data for this product please contact

T: 027-87531629

E: [Proteintech-CN@ptglab.com](mailto:Proteintech-CN@ptglab.com)

W: [ptgcn.com](http://ptgcn.com)

This product is exclusively available under Proteintech Group brand and is not available to purchase from any other manufacturer.