

For Research Use Only

Recombinant Human CLEC-2/CLEC1B protein (rFc Tag)



Catalog Number: Eg4774

Basic Information

Species:
Human

Purity:
>90 %, SDS-PAGE

Tag:
rFc Tag

Technical Specifications

Purity:
>90 %, SDS-PAGE

Endotoxin Level:
<0.1 EU/ μ g protein, LAL method

Source:
HEK293-derived Human CLEC-2 protein Ser55-Pro229 (Accession# Q9P126-1) with a rabbit IgG Fc tag at the C-terminus.

GeneID:
51266

Accession:
Q9P126-1

Predicted Molecular Mass:
46.3 kDa

SDS-PAGE:
50-60 kDa and 100-120 kDa, reducing (R) conditions

Formulation:
Lyophilized from 0.22 μ m filtered solution in PBS, pH 7.4. Normally 5% trehalose and 5% mannitol are added as protectants before lyophilization.

Biological Activity

Not tested

Storage and Shipping

Storage:

It is recommended that the protein be aliquoted for optimal storage. Avoid repeated freeze-thaw cycles.

- Until expiry date, -20°C to -80°C as lyophilized proteins.
- 3 months, -20°C to -80°C under sterile conditions after reconstitution.

Shipping:

The product is shipped at ambient temperature. Upon receipt, store it immediately at the recommended temperature.

Reconstitution

Briefly centrifuge the tube before opening. Reconstitute at 0.1-0.5 mg/mL in sterile water.

Background

C-type lectin-like receptor 2 (CLEC2, also known as CLEC1B) is a type II transmembrane receptor of the C-type lectin superfamily, which are characterized by one or more C-type lectin-like domains (CTLDs). CLEC2 contains a single YXXL/hemi-ITAM (immuno-receptor tyrosine-based activation motif) within its cytoplasmic domain. CLEC-2 is highly expressed on platelets and megakaryocytes and at low levels on other hematopoietic cells, including dendritic cells, neutrophils, monocytes, and macrophages. The first identified ligand for CLEC2 was the platelet-aggregating snake venom protein rhodocytin, and podoplanin has been established as an endogenous ligand for CLEC2. CLEC2 is involved in thrombosis/hemostasis, tumor metastasis, and lymphangiogenesis. CLEC2 can be glycosylated and has been detected as 32- and 40-kDa forms in platelets with varying degrees of glycosylation.

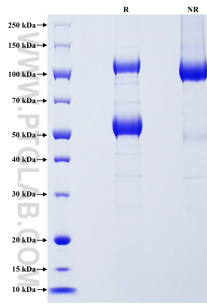
References

1. Colonna M, et al. (2000) *Eur J Immunol.* 30(2):697-704.
2. Meng D, et al. (2021) *Front Immunol.* 12:688643.
3. Mourão-Sá D, et al. (2011) *Eur J Immunol.* 41(10):3040-3053.
4. Wu X, et al. (2015) *EBioMedicine.* 2(3):214-224.
5. Suzuki-Inoue K, et al. (2010) *J Biol Chem.* 285(32):24494-24507.
6. Suzuki-Inoue K, et al. (2006) *Blood.* 107(2):542-549.
7. Gitz E, Pollitt AY, et al. (2014) *Blood.* 124(14):2262-2270.
8. Suzuki-Inoue K, et al. (2011) *J Thromb Haemost.* 9 Suppl 1:44-55.

Synonyms

CLEC1B, CLEC 2, CLEC2, CLEC2B, C-type lectin domain family 1 member B

Selected Validation Data



Purity of Recombinant Human CLEC-2 was determined by SDS-PAGE. The protein was resolved in an SDS-PAGE in reducing (R) and non-reducing (NR) conditions and stained using Coomassie blue.

For technical support and original validation data for this product please contact

T: 027-87531629

E: Proteintech-CN@ptglab.com

W: ptgcn.com

This product is exclusively available under Proteintech Group brand and is not available to purchase from any other manufacturer.