

For Research Use Only

Recombinant Human LILRA1 protein (His Tag)



Catalog Number: Eg4704

Basic Information

Species:
Human

Purity:
>90 %, SDS-PAGE

Tag:
His Tag

Technical Specifications

Purity:
>90 %, SDS-PAGE

Endotoxin Level:
<0.1 EU/ μ g protein, LAL method

Source:
HEK293-derived Human LILRA1 protein Pro17-Asn461 (Accession# O75019-1) with a His tag at the C-terminus.

GeneID:
11024

Accession:
O75019-1

Predicted Molecular Mass:
49.6 kDa

SDS-PAGE:
60-75kDa, reducing (R) conditions

Formulation:
Lyophilized from 0.22 μ m filtered solution in PBS, pH 7.4. Normally 5% trehalose and 5% mannitol are added as protectants before lyophilization.

Biological Activity

Not tested

Storage and Shipping

Storage:
It is recommended that the protein be aliquoted for optimal storage. Avoid repeated freeze-thaw cycles.

- Until expiry date, -20°C to -80°C as lyophilized proteins.
- 3 months, -20°C to -80°C under sterile conditions after reconstitution.

Shipping:
The product is shipped at ambient temperature. Upon receipt, store it immediately at the recommended temperature.

Reconstitution

Briefly centrifuge the tube before opening. Reconstitute at 0.1-0.5 mg/mL in sterile water.

Background

Leukocyte immunoglobulin-like receptor A1 (LILRA1) plays a significant role in the immune system. It is part of the leukocyte immunoglobulin-like receptor (LIR) family. The LILRA1 is predominantly expressed in B cells, where it interacts with major histocompatibility complex class I ligands and contributes to the regulation of immune responses. LILRA1 is involved in various pathways, including the innate immune system and Class I MHC-mediated antigen processing and presentation. It is known to have multiple functions, such as acting as a receptor for class I MHC antigens and potentially playing a role in the recognition and modulation of immune responses.

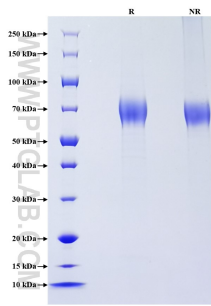
References

1. Tedla N. et al. (2011). *Tissue Antigens*. 77(4):305–316.
2. Hogan LE. et al. (2016). *Sci Rep*. 6(1):21780.
3. Hirayasu K. et al. (2015). *J Hum Genet*. 60(11):703–708.
4. An H. et al. (2010). *J Rheumatol*. 37(8):1596–1606.

Synonyms

CD85 antigen-like family member I, CD85i, Leukocyte immunoglobulin-like receptor 6, Leukocyte immunoglobulin-like receptor subfamily A member 1, LIR6

Selected Validation Data



Purity of Recombinant Human LILRA1 was determined by SDS-PAGE. The protein was resolved in an SDS-PAGE in reducing (R) and non-reducing (NR) conditions and stained using Coomassie blue.

For technical support and original validation data for this product please contact

T: 027-87531629

E: Proteintech-CN@ptglab.com

W: ptgcn.com

This product is exclusively available under Proteintech Group brand and is not available to purchase from any other manufacturer.