

For Research Use Only

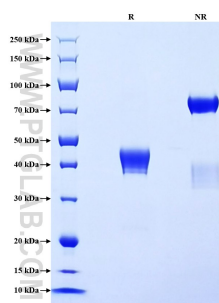
Recombinant Canine MCP-1/CCL2 protein (rFc Tag)



Catalog Number: Eg4550

Basic Information	Species: Canine	Purity: >90 %, SDS-PAGE	Tag: rFc Tag
Technical Specifications	<p>Purity: >90 %, SDS-PAGE</p> <p>Endotoxin Level: <0.1 EU/ µg protein, LAL method</p> <p>Source: HEK293-derived Canine MCP-1 protein Gln24-Pro101 (Accession# P52203) with a rabbit IgG Fc tag at the C-terminus.</p> <p>GeneID: 403981</p> <p>Accession: P52203</p> <p>Predicted Molecular Mass: 35.1 kDa</p> <p>SDS-PAGE: 36-45 kDa, reducing (R) conditions</p> <p>Formulation: Lyophilized from 0.22 µm filtered solution in PBS, pH 7.4. Normally 5% trehalose and 5% mannitol are added as protectants before lyophilization.</p>		
Biological Activity	Not tested		
Storage and Shipping	<p>Storage: It is recommended that the protein be aliquoted for optimal storage. Avoid repeated freeze-thaw cycles.</p> <ul style="list-style-type: none">• Until expiry date, -20°C to -80°C as lyophilized proteins.• 3 months, -20°C to -80°C under sterile conditions after reconstitution. <p>Shipping: The product is shipped at ambient temperature. Upon receipt, store it immediately at the recommended temperature.</p>		
Reconstitution	Briefly centrifuge the tube before opening. Reconstitute at 0.1-0.5 mg/mL in sterile water.		
Background	<p>MCP-1 (also known as CCL2) is a member of the chemokine family. MCP-1 recruits monocytes, memory T cells and dendritic cells to sites of inflammation caused by either tissue injury or infection. MCP-1 has been implicated in the pathogenesis of diseases characterised by monocytic infiltrates, such as psoriasis, rheumatoid arthritis and atherosclerosis. It binds to the chemokine receptors CCR2 and CCR4. Increased expression of MCP-1 is associated with severe acute respiratory syndrome coronavirus 2 infection.</p>		
References	<ol style="list-style-type: none">1.Singh S. et al. (2021) Int Immunopharmacol. 101(Pt B):107598.2.Lin Z. et al. (2023) Front Immunol. 13:1053457.3.Li X. et al. (2017) Gut. 6(1):157-167.4.Huang B. et al. (2007) Cancer Lett. 252(1):86-92.		
Synonyms	CCL2, MCP-1, C-C motif chemokine 2, MCP1		

Selected Validation Data



Purity of Recombinant Canine MCP-1 was determined by SDS-PAGE. The protein was resolved in an SDS-PAGE in reducing (R) and non-reducing (NR) conditions and stained using Coomassie blue.

For technical support and original validation data for this product please contact

T: 027-87531629

E: Proteintech-CN@ptglab.com

W: ptgcn.com

This product is exclusively available under Proteintech Group brand and is not available to purchase from any other manufacturer.