

For Research Use Only

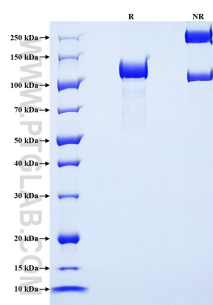
Recombinant Human Complement C6 protein (rFc Tag)



Catalog Number: Eg4529

Basic Information	Species: Human	Purity: >90 %, SDS-PAGE	Tag: rFc Tag
Technical Specifications	<p>Purity: >90 %, SDS-PAGE</p> <p>Endotoxin Level: <0.1 EU/ μg protein, LAL method</p> <p>Source: HEK293-derived Human Complement C6 protein Cys22-Ala934 (Accession# P13671) with a rabbit IgG Fc tag at the C-terminus.</p> <p>GenID: 729</p> <p>Accession: P13671</p> <p>Predicted Molecular Mass: 128.7 kDa</p> <p>SDS-PAGE: 120-130 kDa, reducing (R) conditions</p> <p>Formulation: Lyophilized from 0.22 μm filtered solution in PBS, pH 7.4. Normally 5% trehalose and 5% mannitol are added as protectants before lyophilization.</p>		
Biological Activity	Not tested		
Storage and Shipping	<p>Storage: It is recommended that the protein be aliquoted for optimal storage. Avoid repeated freeze-thaw cycles.</p> <ul style="list-style-type: none">• Until expiry date, -20°C to -80°C as lyophilized proteins.• 3 months, -20°C to -80°C under sterile conditions after reconstitution. <p>Shipping: The product is shipped at ambient temperature. Upon receipt, store it immediately at the recommended temperature.</p>		
Reconstitution	Briefly centrifuge the tube before opening. Reconstitute at 0.1-0.5 mg/mL in sterile water.		
Background	<p>Complement C6 protein is part of the complement system and is a key component of the Membrane Attack Complex (MAC), which acts by forming pores in the plasma membrane of target cells in both natural and adaptive immune responses. The C6 protein plays a cytolytic role in the complement pathway and is involved in the immune response and cytolysis process. Together with other components of the complement cascade, it labels and removes pathogens and damaged cells. C6 proteins have been implicated in a variety of diseases, including meningitis and brucellosis. C6 complement deficiency prevents the development of diet-induced atherosclerosis. Drug development for C6 is currently underway.</p>		
References	<ol style="list-style-type: none">1. Karadadas E, et al. Clin Biochem. 2020;81:15-19.2. Lin K, et al. Blood Adv. 2020;4(9):2049-2057.		
Synonyms	C6, complement component 6, Complement component C6		

Selected Validation Data



Purity of Recombinant Human Complement C6 was determined by SDS-PAGE. The protein was resolved in an SDS-PAGE in reducing (R) and non-reducing (NR) conditions and stained using Coomassie blue.

For technical support and original validation data for this product please contact

T: 027-87531629

E: Proteintech-CN@ptglab.com

W: ptgcn.com

This product is exclusively available under Proteintech Group brand and is not available to purchase from any other manufacturer.