

For Research Use Only

# Recombinant Mouse IGF2 protein (rFc Tag)



Catalog Number: Eg4527

## Basic Information

**Species:**  
Mouse

**Purity:**  
>90 %, SDS-PAGE

**Tag:**  
rFc Tag

## Technical Specifications

**Purity:**

>90 %, SDS-PAGE

**Endotoxin Level:**

<0.1 EU/  $\mu$ g protein, LAL method

**Source:**

HEK293-derived Mouse IGF2 protein Ala25-Glu91 (Accession# P09535-1) with a rabbit IgG Fc tag at the N-terminus.

**GeneID:**

16002

**Accession:**

P09535-1

**Predicted Molecular Mass:**

34.6 kDa

**SDS-PAGE:**

33-38 kDa, reducing (R) conditions

**Formulation:**

Lyophilized from 0.22  $\mu$ m filtered solution in PBS, pH 7.4. Normally 5% trehalose and 5% mannitol are added as protectants before lyophilization.

## Biological Activity

Not tested

## Storage and Shipping

**Storage:**

It is recommended that the protein be aliquoted for optimal storage. Avoid repeated freeze-thaw cycles.

- Until expiry date, -20°C to -80°C as lyophilized proteins.
- 3 months, -20°C to -80°C under sterile conditions after reconstitution.

**Shipping:**

The product is shipped at ambient temperature. Upon receipt, store it immediately at the recommended temperature.

## Reconstitution

Briefly centrifuge the tube before opening. Reconstitute at 0.1-0.5 mg/mL in sterile water.

## Background

Insulin-like growth factor 2 (IGF2) is a crucial protein that plays a significant role in regulating growth, particularly during normal fetal development, and is also often dysregulated during tumorigenesis. IGF2 is one of the main ligands of the type 1 IGF receptor (IGF-1R), a tyrosine kinase receptor that transmits signals upon binding with IGF-II. IGF2 is predominantly secreted via the placenta during pregnancy and, after birth, primarily by hepatocytes, with its secretion being independent of growth hormone (GH) secretion, unlike IGF-I.

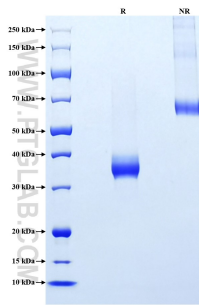
## References

1. Benyoucef, S. et al. (2007). *Biochem. J.* 403, 603-613.
2. Frasca, F. et al. (1999). *Mol. Cell. Biol.* 19, 3278-3288.
3. Pandini, G. et al. (2002). *J. Biol. Chem.* 277, 39684-39695.
4. Vella, V. et al. (2019). *Cells.* 8, 1017.
5. Sciacca, L. et al. (1999). *Oncogene.* 18, 2471-2479.

## Synonyms

Igf2, Igf-2, IGF-II, Insulin-like growth factor II, Multiplication-stimulating polypeptide

## Selected Validation Data



Purity of Recombinant Mouse IGF2 was determined by SDS-PAGE. The protein was resolved in an SDS-PAGE in reducing (R) and non-reducing (NR) conditions and stained using Coomassie blue.

For technical support and original validation data for this product please contact

T: 027-87531629

E: [Proteintech-CN@ptglab.com](mailto:Proteintech-CN@ptglab.com)

W: [ptgcn.com](http://ptgcn.com)

This product is exclusively available under Proteintech Group brand and is not available to purchase from any other manufacturer.