

For Research Use Only

# Recombinant Mouse Leptin protein (rFc Tag)



Catalog Number: Eg4486

## Basic Information

**Species:**  
Mouse

**Purity:**  
>90 %, SDS-PAGE

**Tag:**  
rFc Tag

## Technical Specifications

**Purity:**

>90 %, SDS-PAGE

**Endotoxin Level:**

<0.1 EU/  $\mu$ g protein, LAL method

**Source:**

HEK293-derived Mouse Leptin protein Val22-Cys167 (Accession# Q544U0) with a rabbit IgG Fc tag at the N-terminus.

**GeneID:**

16846

**Accession:**

Q544U0

**Predicted Molecular Mass:**

43.2 kDa

**SDS-PAGE:**

40-50 kDa, reducing (R) conditions

**Formulation:**

Lyophilized from 0.22  $\mu$ m filtered solution in PBS, pH 7.4. Normally 5% trehalose and 5% mannitol are added as protectants before lyophilization.

## Biological Activity

Not tested

## Storage and Shipping

**Storage:**

It is recommended that the protein be aliquoted for optimal storage. Avoid repeated freeze-thaw cycles.

- Until expiry date, -20°C to -80°C as lyophilized proteins.
- 3 months, -20°C to -80°C under sterile conditions after reconstitution.

**Shipping:**

The product is shipped at ambient temperature. Upon receipt, store it immediately at the recommended temperature.

## Reconstitution

Briefly centrifuge the tube before opening. Reconstitute at 0.1-0.5 mg/mL in sterile water.

## Background

Leptin is a 16 kDa adipocyte-derived hormone, and it has attracted interest in the field of obesity research due to its role in the regulation of energy balance. Leptin, secreted from adipose tissues in proportion to the fat store, acts in the hypothalamus to regulate feeding behavior. Leptin has also been shown to play an essential role in tumorigenesis, tumor progression, and metastasis, due to its oncogenic, mitogenic, pro-inflammatory, and pro-angiogenic actions. Mutations in this gene and/or its regulatory regions cause severe obesity, and morbid obesity with hypogonadism. Leptin has also been linked to type 2 diabetes mellitus development.

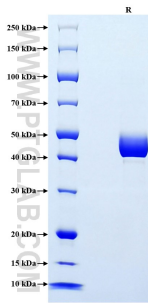
## References

1. Arnold M.et al.(2016) Cancer Epidemiol.41:8-15.
2. Zhang Y.et al.(1994) Nature.37:425-32.
3. deLuis DA.et al.(2009) Minerva Med.229-36.
- 4.Jiang N.et al.(2014) Drug Des Devel Ther.8:2295-302.
5. Vansaun MN.et al.(2013) Clin Cancer Res.19:1926-1932.

## Synonyms

Lep, Leptin, Ob, Obesity factor

## Selected Validation Data



Purity of Recombinant Mouse Leptin was determined by SDS-PAGE. The protein was resolved in an SDS-PAGE in reducing (R) conditions and stained using Coomassie blue.

For technical support and original validation data for this product please contact

T: 027-87531629

E: [Proteintech-CN@ptglab.com](mailto:Proteintech-CN@ptglab.com)

W: [ptgcn.com](http://ptgcn.com)

This product is exclusively available under Proteintech Group brand and is not available to purchase from any other manufacturer.