

For Research Use Only

# Recombinant Mouse Cathepsin B protein (mFc Tag)



Catalog Number: Eg3937

## Basic Information

**Species:**  
Mouse

**Purity:**  
>90 %, SDS-PAGE

**Tag:**  
mFc Tag

## Technical Specifications

**Purity:**

>90 %, SDS-PAGE

**Endotoxin Level:**

<0.1 EU/  $\mu$ g protein, LAL method

**Source:**

HEK293-derived Mouse Cathepsin B protein His18-Phe339 (Accession# P10605) with a mouse IgG Fc tag at the C-terminus.

**GeneID:**

13030

**Accession:**

P10605

**Predicted Molecular Mass:**

62.0 kDa

**SDS-PAGE:**

28 kDa, 42-47 kDa and 65-80 kDa, reducing (R) conditions

**Formulation:**

Lyophilized from 0.22  $\mu$ m filtered solution in PBS, pH 7.4. Normally 5% trehalose and 5% mannitol are added as protectants before lyophilization.

## Biological Activity

Not tested

## Storage and Shipping

**Storage:**

It is recommended that the protein be aliquoted for optimal storage. Avoid repeated freeze-thaw cycles.

- Until expiry date, -20°C to -80°C as lyophilized proteins.
- 3 months, -20°C to -80°C under sterile conditions after reconstitution.

**Shipping:**

The product is shipped at ambient temperature. Upon receipt, store it immediately at the recommended temperature.

## Reconstitution

Briefly centrifuge the tube before opening. Reconstitute at 0.1-0.5 mg/mL in sterile water.

## Background

CTSB (Cathepsin B) is also named CPSB and belongs to the peptidase C1 family. It participates in intracellular degradation and turnover of proteins. Cathepsin B precursors found in human malignant ascites fluid do not possess mannose-rich carbohydrates, suggesting a defect in the post-translational processing of carbohydrate moieties on tumors. Cathepsin B exists in both glycosylated and unglycosylated forms. Western blot can detect the 43 kDa form of pro-CTSB, 31 kDa, and 25 kDa mature forms in mouse brain.

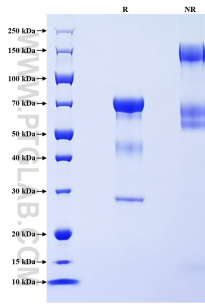
## References

1. Moin K. et al. (1992). Biochem J. 285 (Pt 2)(Pt 2):427-434.
2. Vitner EB. et al. (2010). Hum Mol Genet. 19(18):3583-3590.

## Synonyms

Cathepsin B heavy chain, Cathepsin B light chain, Cathepsin B1, Ctsb, EC:3.4.22.1

## Selected Validation Data



Purity of Recombinant Mouse Cathepsin B was determined by SDS-PAGE. The protein was resolved in an SDS-PAGE in reducing (R) and non-reducing (NR) conditions and stained using Coomassie blue.

For technical support and original validation data for this product please contact

T: 027-87531629

E: [Proteintech-CN@ptglab.com](mailto:Proteintech-CN@ptglab.com)

W: [ptgcn.com](http://ptgcn.com)

This product is exclusively available under Proteintech Group brand and is not available to purchase from any other manufacturer.