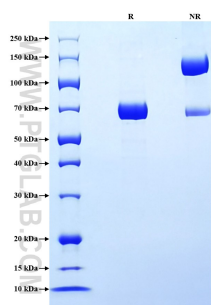


# Recombinant Human Serpin E1/PAI-1 protein (rFc Tag)

Catalog Number: Eg3798

Basic Information	Species: Human	Purity: >90 %, SDS-PAGE	Tag: rFc Tag
Technical Specifications	<p><b>Purity:</b> &gt;90 %, SDS-PAGE</p> <p><b>Endotoxin Level:</b> &lt;0.1 EU/ µg protein, LAL method</p> <p><b>Source:</b> HEK293-derived Human Serpin E1 protein Val24-Pro402 (Accession# P05121-1) with a rabbit IgG Fc tag at the N-terminus.</p> <p><b>GeneID:</b> 5054</p> <p><b>Accession:</b> P05121-1</p> <p><b>Predicted Molecular Mass:</b> 70.0 kDa</p> <p><b>SDS-PAGE:</b> 65-75 kDa, reducing (R) conditions</p> <p><b>Formulation:</b> Lyophilized from 0.22 µm filtered solution in PBS, pH 7.4. Normally 5% trehalose and 5% mannitol are added as protectants before lyophilization.</p>		
Biological Activity	Not tested		
Storage and Shipping	<p><b>Storage:</b> It is recommended that the protein be aliquoted for optimal storage. Avoid repeated freeze-thaw cycles.</p> <ul style="list-style-type: none"><li>• Until expiry date, -20°C to -80°C as lyophilized proteins.</li><li>• 3 months, -20°C to -80°C under sterile conditions after reconstitution.</li></ul> <p><b>Shipping:</b> The product is shipped at ambient temperature. Upon receipt, store it immediately at the recommended temperature.</p>		
Reconstitution	Briefly centrifuge the tube before opening. Reconstitute at 0.1-0.5 mg/mL in sterile water.		
Background	<p>SERPINE1, also named as Plasminogen activator inhibitor type 1 (PAI-1), is a member of the serine protease inhibitor (SERPIN) superfamily. It is produced by the vascular endothelium, the liver, the monocytes/macrophages, the platelets and the adipose tissue. High plasma levels of PAI-1 have been associated with an increased risk of suffering cardiovascular diseases. It is implicated in the pathogenesis of obesity, insulin resistance and type 2 diabetes. In several tumor types, SERPINE1 expression is up-regulated and it has been described as a poor prognostic marker. Besides its prognostic value, SERPINE1 expression has been validated as a marker for therapy decision making in patients with node-negative breast cancer. Defects in this gene are the cause of plasminogen activator inhibitor-1 deficiency (PAI-1 deficiency), and high concentrations of the gene product are associated with thrombophilia.</p>		
References	<ol style="list-style-type: none"><li>1. Huang J, et al.(2012). Blood. 20: 4873-81.</li><li>2. Kohler HP, et al. (2000). N Engl J Med. 342: 1792-801.</li><li>3. Festa A, et al. (2006). Circulation. 113: 1753-9.</li><li>4. Look MP, et al. (2002). J Natl Cancer Inst. 16:94(2):116-28.</li><li>5. Ulisse S, et al. (2009). Curr Cancer Drug Targets. 9(1):32-71.</li></ol>		
Synonyms	PAI-1, SERPINE1, SERPIN1, PAI-1, PAI, PAI 1		

## Selected Validation Data



Purity of Recombinant Human Serpin E1 was determined by SDS-PAGE. The protein was resolved in an SDS-PAGE in reducing (R) and non-reducing (NR) conditions and stained using Coomassie blue.

For technical support and original validation data for this product please contact

T: 027-87531629

E: [Proteintech-CN@ptglab.com](mailto:Proteintech-CN@ptglab.com)

W: [ptgcn.com](http://ptgcn.com)

This product is exclusively available under Proteintech Group brand and is not available to purchase from any other manufacturer.