

For Research Use Only

Recombinant Human LILRA6 protein (rFc Tag)



Catalog Number: Eg3776

Basic Information

Species:
Human

Purity:
>90 %, SDS-PAGE

Tag:
rFc Tag

Technical Specifications

Purity:

>90 %, SDS-PAGE

Endotoxin Level:

<0.1 EU/ μ g protein, LAL method

Source:

HEK293-derived Human LILRA6 protein Gly24-Asn447 (Accession# Q6PI73-1) with a rabbit IgG Fc tag at the C-terminus.

GeneID:

79168

Accession:

Q6PI73-1

Predicted Molecular Mass:

72.6 kDa

SDS-PAGE:

80-90 kDa, reducing (R) conditions

Formulation:

Lyophilized from 0.22 μ m filtered solution in PBS, pH 7.4. Normally 5% trehalose and 5% mannitol are added as protectants before lyophilization.

Biological Activity

Not tested

Storage and Shipping

Storage:

It is recommended that the protein be aliquoted for optimal storage. Avoid repeated freeze-thaw cycles.

- Until expiry date, -20°C to -80°C as lyophilized proteins.
- 3 months, -20°C to -80°C under sterile conditions after reconstitution.

Shipping:

The product is shipped at ambient temperature. Upon receipt, store it immediately at the recommended temperature.

Reconstitution

Briefly centrifuge the tube before opening. Reconstitute at 0.1-0.5 mg/mL in sterile water.

Background

Leukocyte immunoglobulin-like receptor subfamily A member 6 belongs to the leukocyte immunoglobulin-like receptors (LILRs, also known as ILTs and LIRs). Among 11 family members, inhibitory LILRB3 (ILT5, LIR3) and activating LILRA6 (ILT8) represent a unique homologous receptor pair characterized by highly polymorphic ectodomains.

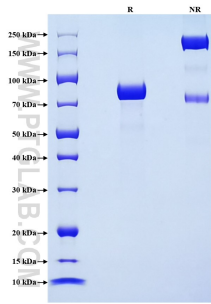
References

1. Bashirova AA, et al. (2023) Immunogenetics. 75(3):263-267.
2. Lopez-Alvarez MR, et al. (2014) Immunogenetics. 66:73-83.

Synonyms

Leucocyte Ig-Like Receptor A6, Leukocyte immunoglobulin-like receptor subfamily A member 6

Selected Validation Data



Purity of Recombinant Human LILRA6 was determined by SDS-PAGE. The protein was resolved in an SDS-PAGE in reducing (R) and non-reducing (NR) conditions and stained using Coomassie blue.

For technical support and original validation data for this product please contact

T: 027-87531629

E: Proteintech-CN@ptglab.com

W: ptgcn.com

This product is exclusively available under Proteintech Group brand and is not available to purchase from any other manufacturer.