

For Research Use Only

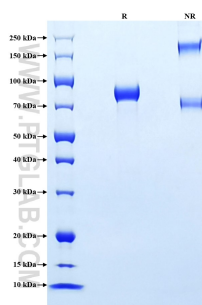
Recombinant Human Complement factor H protein (rFc Tag)



Catalog Number: Eg3753

| Basic Information | Species: Human | Purity: >90 %, SDS-PAGE | Tag: rFc Tag |
|--------------------------|---|----------------------------|-----------------|
| Technical Specifications | <p>Purity: >90 %, SDS-PAGE</p> <p>Endotoxin Level: <0.1 EU/ μg protein, LAL method</p> <p>Source: HEK293-derived Human Complement factor H protein Ser860-Arg1231 (Accession# P08603-1) with a rabbit IgG Fc tag at the C-terminus.</p> <p>GeneID: 3075</p> <p>Accession: P08603-1</p> <p>Predicted Molecular Mass: 68.0 kDa</p> <p>SDS-PAGE: 75-95 kDa, reducing (R) conditions</p> <p>Formulation: Lyophilized from 0.22 μm filtered solution in PBS, pH 7.4. Normally 5% trehalose and 5% mannitol are added as protectants before lyophilization.</p> | | |
| Biological Activity | Not tested | | |
| Storage and Shipping | <p>Storage: It is recommended that the protein be aliquoted for optimal storage. Avoid repeated freeze-thaw cycles.</p> <ul style="list-style-type: none">• Until expiry date, -20°C to -80°C as lyophilized proteins.• 3 months, -20°C to -80°C under sterile conditions after reconstitution. <p>Shipping: The product is shipped at ambient temperature. Upon receipt, store it immediately at the recommended temperature.</p> | | |
| Reconstitution | Briefly centrifuge the tube before opening. Reconstitute at 0.1-0.5 mg/mL in sterile water. | | |
| Background | <p>Complement factor H (CFH) is an abundant plasma glycoprotein that regulates the function of the alternative complement pathway in the fluid phase and on cellular surfaces. Factor H binds to C3b, accelerates the decay of the alternative pathway C3-convertase (C3bBb), and acts as a cofactor for the factor I-mediated proteolytic inactivation of C3b. It plays a critical role in the homeostasis of the complement system in plasma and in the protection of bystander host cells and tissues from damage by complement activation. Abnormalities in factor H have been associated with renal disease.</p> | | |
| References | <ol style="list-style-type: none">1. Ripoché, J. et al. (1988) Biochem J. 249(2):593-602.2. Esparza-Gordillo, J. et al. (2004) Mol immunol. 41(4):355-67.3. Pickering, MC. et al. (2008) Clin exp immunol. 151(2):210-30. | | |
| Synonyms | CFH, Complement factor H, ARMD4, ARMS1, Factor H | | |

Selected Validation Data



Purity of Recombinant Human Complement factor H was determined by SDS-PAGE. The protein was resolved in an SDS-PAGE in reducing (R) and non-reducing (NR) conditions and stained using Coomassie blue.

For technical support and original validation data for this product please contact

T: 027-87531629

E: Proteintech-CN@ptglab.com

W: ptgcn.com

This product is exclusively available under Proteintech Group brand and is not available to purchase from any other manufacturer.