

For Research Use Only

# Recombinant Human FCRL1 protein (rFc Tag)



Catalog Number: Eg3713

## Basic Information

**Species:**  
Human

**Purity:**  
>90 %, SDS-PAGE

**Tag:**  
rFc Tag

## Technical Specifications

**Purity:**

>90 %, SDS-PAGE

**Endotoxin Level:**

<0.1 EU/ µg protein, LAL method

**Source:**

HEK293-derived Human FCRL1 protein Ala17-Ser307 (Accession# Q9NQ30-1) with a rabbit IgG Fc tag at the C-terminus.

**GeneID:**

115350

**Accession:**

Q96LA6-1

**Predicted Molecular Mass:**

57.9 kDa

**SDS-PAGE:**

60-80 kDa, reducing (R) conditions

**Formulation:**

Lyophilized from 0.22 µm filtered solution in PBS, pH 7.4. Normally 5% trehalose and 5% mannitol are added as protectants before lyophilization.

## Biological Activity

Not tested

## Storage and Shipping

**Storage:**

It is recommended that the protein be aliquoted for optimal storage. Avoid repeated freeze-thaw cycles.

- Until expiry date, -20°C to -80°C as lyophilized proteins.
- 3 months, -20°C to -80°C under sterile conditions after reconstitution.

**Shipping:**

The product is shipped at ambient temperature. Upon receipt, store it immediately at the recommended temperature.

## Reconstitution

Briefly centrifuge the tube before opening. Reconstitute at 0.1-0.5 mg/mL in sterile water.

## Background

FCRL1 (Fc receptor-like 1) is a cell-surface membrane protein belonging to FCRL family and is preferentially expressed on B cells. FCRL1 was first identified as an activating receptor capable of enhancing signaling through the BCR. Human FCRL1 consists of three Ig-like domains and two ITAM-like sequences in its cytoplasmic tail.

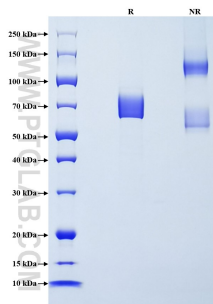
## References

1. Du X, et al. (2008). Blood. 111(1):338-43.
2. DeLuca JM, et al. (2021). J Immunol. 207(11):2688-2698.

## Synonyms

CD307a, Fc receptor-like protein 1, FcRH1, FcR-like protein 1, IFGP family protein 1

## Selected Validation Data



Purity of Recombinant Human FCRL1 was determined by SDS-PAGE. The protein was resolved in an SDS-PAGE in reducing (R) and non-reducing (NR) conditions and stained using Coomassie blue.

For technical support and original validation data for this product please contact

T: 027-87531629

E: [Proteintech-CN@ptglab.com](mailto:Proteintech-CN@ptglab.com)

W: [ptgcn.com](http://ptgcn.com)

This product is exclusively available under Proteintech Group brand and is not available to purchase from any other manufacturer.