

For Research Use Only

# Recombinant Human IL15RA protein (rFc Tag)(HPLC verified)



Catalog Number: Eg3588

## Basic Information

**Species:**  
Human

**Purity:**  
>90 %, SDS-PAGE<br>>90%,  
SEC-HPLC

**Tag:**  
rFc Tag

## Technical Specifications

**Purity:**  
>90 %, SDS-PAGE<br>>90%, SEC-HPLC

**Endotoxin Level:**  
<0.1 EU/  $\mu$ g protein, LAL method

**Source:**  
HEK293-derived Human IL15RA protein Ile31-Thr205 (Accession# Q13261-1) with a rabbit IgG Fc tag at the C-terminus.

**GeneID:**  
3601

**Accession:**  
Q13261-1

**Predicted Molecular Mass:**  
44.7 kDa

**SDS-PAGE:**  
65-75 kDa, reducing (R) conditions

**Formulation:**  
Lyophilized from 0.22  $\mu$ m filtered solution in PBS, pH 7.4. Normally 5% trehalose and 5% mannitol are added as protectants before lyophilization.

## Biological Activity

Not tested

## Storage and Shipping

### Storage:

It is recommended that the protein be aliquoted for optimal storage. Avoid repeated freeze-thaw cycles.

- Until expiry date, -20°C to -80°C as lyophilized proteins.
- 3 months, -20°C to -80°C under sterile conditions after reconstitution.

### Shipping:

The product is shipped at ambient temperature. Upon receipt, store it immediately at the recommended temperature.

## Reconstitution

Briefly centrifuge the tube before opening. Reconstitute at 0.1-0.5 mg/mL in sterile water.

## Background

Interleukin-15 receptor  $\alpha$  (IL15RA), also known as CD215 or IL-15R  $\alpha$ , is a member of the type I cytokine receptor family and is an important component of proinflammatory signaling for interleukin 15 (IL15). IL15 and IL15RA are present in the circulation and have been detected in a variety of tissues, where they affect physiological functions such as muscle contractility and overall metabolism. (PMID: 28602725) IL-15R  $\alpha$  signals in both cis and trans, where cis signaling means that IL-15 binds to its receptor on the same cell, and trans signaling means that IL-15 signals through extracellular IL-15R  $\alpha$ . IL15/IL15RA autocrine growth-stimulating loops are found in human T-cell lymphotropic virus 1 (HTLV-1)-associated adult T-cell leukemia/lymphoma progression. (PMID: 36009415)

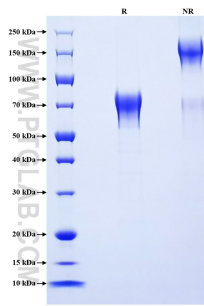
## References

1. Loro E, et al. (2017). Bone. 103:20-30.
2. Marra P, et al. (2014). Cancer Res. 74(17):4908-21.
3. Bellón T, et al. (2022). Biomedicines. 10(8):1868.

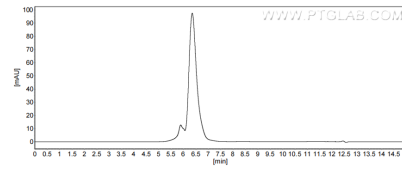
## Synonyms

CD215, IL 15 receptor subunit alpha, IL 15R alpha, IL 15RA, IL-15 receptor subunit alpha

## Selected Validation Data



Purity of Recombinant Human IL15RA was determined by SDS-PAGE. The protein was resolved in an SDS-PAGE in reducing (R) and non-reducing (NR) conditions and stained using Coomassie blue.



The purity of Human IL15RA was greater than 90% as determined by SEC-HPLC.

For technical support and original validation data for this product please contact

T: 027-87531629

E: [Proteintech-CN@ptglab.com](mailto:Proteintech-CN@ptglab.com)

W: [ptgcn.com](http://ptgcn.com)

This product is exclusively available under Proteintech Group brand and is not available to purchase from any other manufacturer.